

# MANISCOPIC

**MHT 860 L**  
Turbo

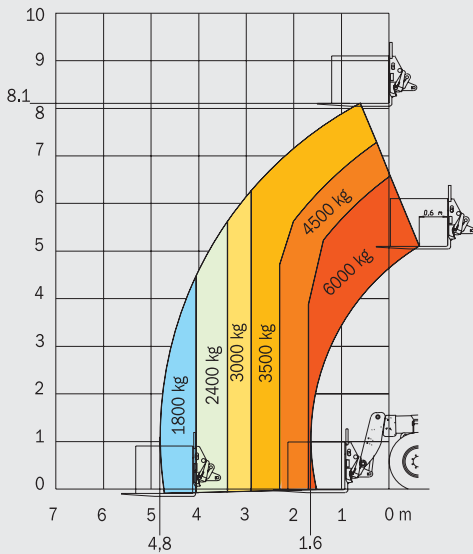


- Capacity : 6000 kg
- Lift height : 8,10 m
- Engine : 132 cv
- 4 wheel steer – 4 wheel drive
- Hydrostatic transmission
- Frame levelling 10°/10°

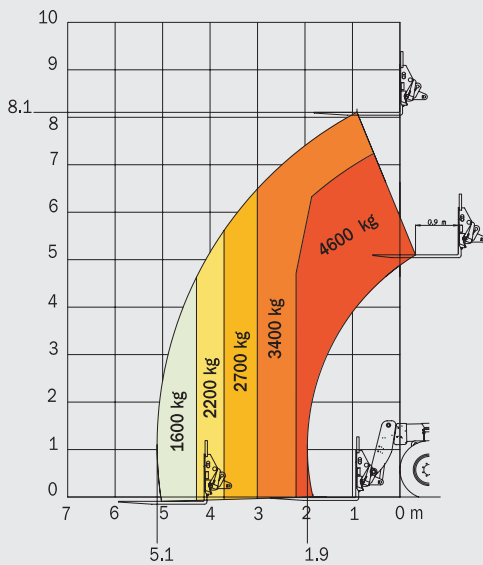
 **MANITOU**

# MHT 860 L TURBO LSU

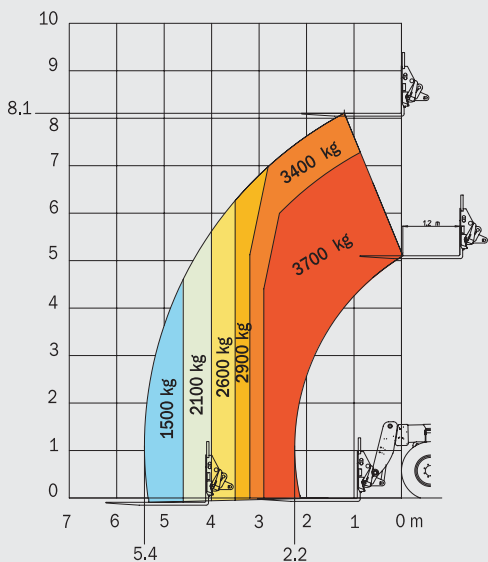
## LOAD CENTRE AT 600 MM



## LOAD CENTRE AT 900 MM



## LOAD CENTRE AT 1200 MM



## ENGINE

Diesel PERKINS 1104C-44 TA

Capacity :

4 cylinders/4400 cm<sup>3</sup>

Power (ISO/TR 14396):

132 HP/97 kw

Rated speed

2200 r.p.m.

Maximum torque at 1400 r.p.m. :

500 Nm

Injection directe

Fan :

puller

Cooling :

water

Anti-polluting standards

Battery :

12 Volts

Capacity :

120 Ah

## LIFT CAPACITY / HEIGHT

Load centre at 600 mm at 900 mm at 1200 mm

Lift capacity : 6000 kg 4600 kg 3700 kg

Capacity at max. height : 3500 kg 3400 kg 3400 kg

Capacity at max. front reach : 1800 kg 1600 kg 1500 kg

Lift height : 8,10 m 8,10 m 8,10 m

Maximum front reach : 4,80 m 5,10 m 5,40 m

## TRANSMISSION

Hydrostatic transmission

Hydrostatic pump with variable flow and continuous speed regulation

Reversing shift : electro-magnetic

2 forward and reverse speeds :

Low speed : 10 km/h

Fast speed : 32 km/h

## HYDRAULICS

**Main pump :** Piston Load Sensing Haute pression

Maximum pressure : 275 bar

Capacity : 140 L/mn

**Steering pump**

Type : Load Sensing

Maximum pressure : 170 bar

**Drive Type :** Proportional hydraulic joystick with 3 simultaneous movements

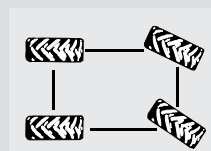
- 1- Lifting
- 2- Crowed
- 3- Boom extension
- 4- Auxiliary

## AXLES

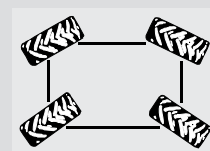
HURTH "Heavy Duty", oil bath with epicycloidal reduction with 4 satellites Integrated steering cylinders with double action in high position

Frame levelling 10°/10° on front axle

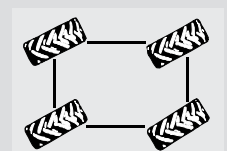
3 steering modes:



2 wheel steering

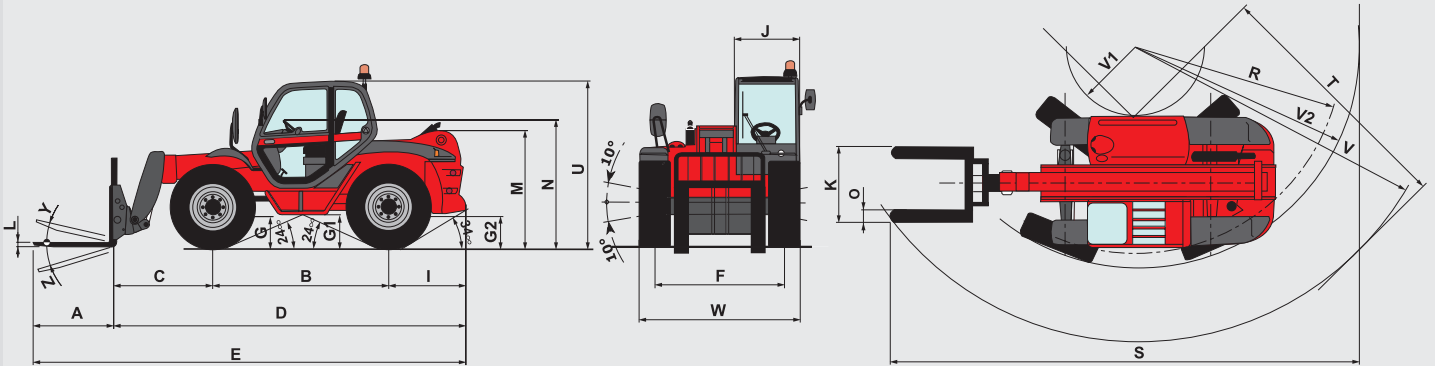


4 wheel steering



Crabsteer

## DIAGRAMS



A	B	C	D	E	F	G	G1	G2	I	J	K	L	M	N	O	R	S	T	U	V	V1	V2	W	Y	Z
1200	2730	1540	5365	6565	1930	465	500	465	1095	865	1750	60	1725	1845	200	3550	7950	4050	2450	4850	1130	3750	2400	11°	125°

### BRAKES

Type : oil bath multidisc  
 Drive type : hydraulic  
 On axle : front + rear  
 Parking brake on front axles :  
 Oil bath multidisc negative parking brake.

### CAPACITIES

Cooling circuit : 15 L  
 Engine oil : 8,1 L  
 Equipment hydraulic oil : 140 L  
 Fuel tank : 120 L

### TYRES

Model : 18 - 22,5 16 PR  
 Pressure : 5 bar  
 Drawbar pull : 11200 daN

### STANDARD EQUIPMENTS

- ROPS-FOPS cabin
- GRAMMER seat
- Front and rear wipers
- Driving lights
- Rotating beacon
- Left rearview mirror
- Safety device with automatic lock of aggravating movements
- Safety valves on cylinders
- Heating

### LIFTING/TELESCOPING MOTIONS

Unladen lifting : 9.8 sec  
 Unladen lowering : 7.8 sec  
 Unladen extending internal telescope : 11.3 sec  
 Unladen retracting internal telescope : 6.7 sec

### FORKS

Dimensions : 200 x 60 x 1200 mm  
 Weight of forks carriage : 560 kg

### OPTIONS

- Air conditioning
- Comfort seat
- Roof wipers
- Cabin rearview mirror
- Tyres 445/70 R24

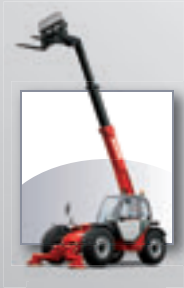
### WEIGHT

Total weight with equipment : 11515 kg  
 Total weight laden with forks : 17515 kg

# MHT 860 L TURBO LSU

# Manitou, material handling world leader

Inventor of the rough terrain forklift truck, Manitou offers today the most comprehensive range to meet all specific handling and personal lifting requirements :



**MANISCOPIC**  
Telescopic trucks



**MANITOU**  
Rough terrain and semi industrial masted trucks



**MANIACCESS**  
Access equipment



**Twisco**  
Compact telescopic handler



**MANIHOE**  
Backhoe/Loader with telescopic boom



**MANITRANSIT**  
Truck mounted forklifts



**MANILOADER**  
Articulated wheeled loaders



**MANILEC**  
Electric pallet trucks and electric stackers

## A network of skilled professionals at your service !

With a network of 600 service and parts centres in more than 120 countries, Manitou provides an efficient after-sales support based on the expertise of thousands of factory trained technicians.



The equipment supplied with each model may differ from that described in this leaflet. For more details, contact your MANITOU dealer.