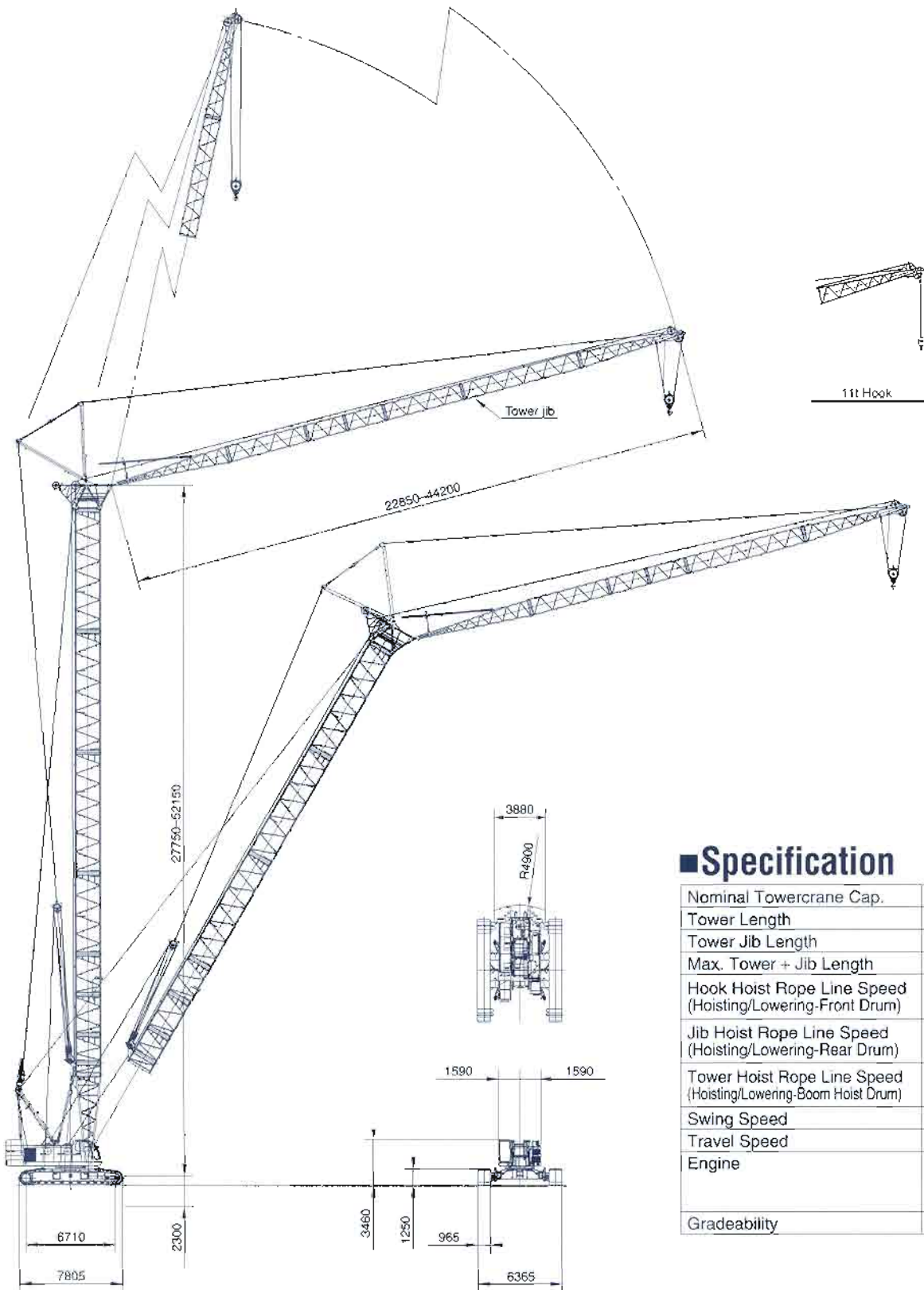




SCX 1200

120-M ton Hydraulic Crawler Crane
Luffing Towercrane Att.



■ Specification

Nominal Towercrane Cap.	20.0 t × 14.0 m
Tower Length	27.75 m~52.15 m
Tower Jib Length	22.85 m~44.20 m
Max. Tower + Jib Length	52.15 m + 44.20 m
Hook Hoist Rope Line Speed (Hoisting/Lowering-Front Drum)	120~2.0 m/min
Jib Hoist Rope Line Speed (Hoisting/Lowering-Rear Drum)	48~2.0 m/min
Tower Hoist Rope Line Speed (Hoisting/Lowering-Boom Hoist Drum)	51~2.0 m/min
Swing Speed	2.1 min. ⁻¹ (2.1 rpm)
Travel Speed	1.5/1.1 kph
Engine	Mitsubishi 6D24-T 184kW/2,000min. ⁻¹ (250 ps/2,000rpm)
Gradeability	17° (30%)

Luffing Towercrane 20 metric tons

TOWER BOOM:

- Lattice construction, round tubular main chords, alloy, hi-ten steel, with bracing of round steel tubing.
- Tower boom connections:In-line pin connections at 1.85m deep by 1.85m wide.
- Special tower boom extensions0.90m and 2.15m long, lattice construction, mounts tower jib bail assembly on upper part, and just pinned next to 7.60m bottom section. Available to use as liftcrane boom extension.
- Tower boom extensionsAvailable in length of 3.05m, 6.10m and 9.15m with tower boom/tower jib hoist pendants. Available to use as liftcrane boom extension.
- Tower head section1.85m long, lattice construction; pinned on top of tower boom. This section pins tower jib and fan-shaped post, and provides one guide sheaves for hoist cable and two guide rollers for tower jib hoist pendant ropes
- Tower boom length27.75m to 52.15m, the configuration of a 52.15m tower boom as maximum is as under
 (1) 7.60m bottom section + (2) 0.90m and 2.15m special ext. + (3) 3.05m ext × 1 pc. + (4) 9.15m ext × 1 pc. + (5) 9.15m ext. × 1 pc. (w/expanded metal) + (6) 9.15m ext. × 2 pcs + (7) 1.85m head section.
- Tower boom luffing angle90° thru 60° steplessly.

Note:

1. Bottom section of 7.60m long and boom extensions of 3.05m, 6.10m and 9.15m long as necessary to complete liftcrane boom attachment are available from those of luffing towercrane boom attachment.
2. In a case of converting luffing towercrane boom attachment of 52.15m as max. to liftcrane boom attachment of 73.15m as maximum as available, three items of one 9.15m boom extension, 6.10m boom extension and 7.60m tapered crane top section are only additionally required

TOWER JIB:

- Lattice construction, round tubular main chords, alloy hi-ten steel, with bracing of round steel tubing.
- Tower jib connectionsIn-line pin connections at 1.20m deep by 1.27m wide.
- Basic tower jibThree-piece, 22.85m basic length; 9.15m bottom sections, one 6.10m tapered extension and 7.60m tower jib top section.
- Tower jib top head machinerySingle head and one guide sheaves mounted on anti-friction bearings.
- Tower jib extensionsAvailable in 3.05m, 6.10m and 9.15m lengths with pendants.
- Maximum tower jib length44.20m; a 44.20m tower jib as maximum consists of (1) 9.15m bottom section + (2) 6.10m tapered ext. × 1 pc. + (3) 3.05m ext. × 2 pcs. +(4) 6.10m ext. × 1pc. + (5) 9.15m ext × 1 pc. + (6) 7.60m top section.
- Tower jib angleAvailable from 15° thru 78° (to ground).

FAN-SHAPED POST:

All-welded construction; pinned to tower head section. This serves as mechanical connection for tower jib hoisting and lowering motions.

TOWER JIB BAIL AND BRIDLE:

All-welded construction; provided with larger sheaves of a 21.4 D/d ratio on both bail and bridle for 8-part tower jib hoist rope reeving. Bail mounted on 0.90m and 2.15m special tower boom extensions, and bridle suspended between an 8-part tower jib hoist rope and pendant ropes connecting to tower post.

HOOK BLOCKS:

To be selected from 30ton and 11ton hook blocks (as same as those of the HOOK BLOCKS mentioned in to "Crane 120 metric tons" of separate SCX1200 SPECIFICATIONS).

DRUM DATA:

See DRUM DATA mentioned into page 7 of separate SCX1200 SPECIFICATIONS. In case that machine is operated under luffing towercrane attachment, rope line speed of rear main drum (as used for tower jib hoisting/lowering motion) must be changed to "48-2.0mpm"

HOIST REEVING:

No. of part line	Towercrane hoist	
	2	1
Max. load (ton)	20.0	11.0

CABLES:

- Front drumPS19+39×P7, non-spin type, 26mm dia./300m long, breaking load 651kN (66.4t).
- Rear drumIWRC 6×P-WS (31), 26mm dia./200m long, breaking load 557kN(56.8t)
- Boom hoist drumSame as that of liftcrane application.
- Optional 3rd drumSame as that of liftcrane application.

WORKING WEIGHT:

Approx. 129.0ton with 52.15m tower boom, 44.20m tower jib, 45.0ton counterweight, 1.5ton auxiliary weight, 965mm wide track shoes and 20t hook block.

GROUND PRESSURE:

92.0kPa <0.94kg/cm²> under a 129.0ton working weight mentioned above.

Luffing Towercrane Capacities

■ w/27.75m Tower

Jib length (m)	22.85			
Tower angle (°)	90	80	70	60
Working radius (m)	90	80	70	60
8.0	20.0/8.1			
9.0	20.0			
10.0	20.0			
12.0	20.0			
14.0	20.0			
15.0	18.6			
16.0	17.5	16.9/16.6		
18.0	15.5	15.5		
20.0	14.0	14.0		
22.0	12.5	12.5		
24.0	10.7	10.7	10.5/24.6	
26.0	9.2/24.6	10.3	10.3	
28.0		10.1	10.1	
30.0		9.6/29.4	9.3	9.1/31.9
32.0			9.1	9.1
34.0			8.8/33.9	8.5
36.0				7.9
38.0				7.4
40.0				7.3/38.2

(EC400112)

■ w/30.80m Tower

Jib length (m)	22.85				25.90			
Tower angle (°)	90	80	70	60	90	80	70	60
Working radius (m)	90	80	70	60	90	80	70	60
8.0	20.0/8.1				18.6/8.7			
9.0	20.0				18.6			
10.0	20.0				18.6			
12.0	20.0				18.6			
14.0	20.0				18.6			
15.0	18.6				18.6			
16.0	17.5	16.4/17.1			17.5			
18.0	15.5	15.5			15.5	15.3/18.2		
20.0	14.0	14.0			14.0	14.0		
22.0	12.5	12.5			12.5	12.5		
24.0	10.9	10.9	10.2/25.6		11.2	11.2		
26.0	9.3/24.6	10.1	10.1		10.2	10.2	9.7/27.2	
28.0		9.6	9.6		8.2/27.5	9.5	9.5	
30.0		9.3/29.9	9.2			9.1	9.1	
32.0			9.0	8.4/33.4		8.4	8.4	
34.0			8.7	8.2		8.2/32.8	7.9	7.6/35.4
36.0			8.3/35.0	7.6			7.5	7.5
38.0				7.1			7.2/37.9	7.0
40.0				6.7/39.7				6.5
42.0								6.1
44.0								6.0/42.7

(EC400112)

■ w/33.85m Tower

Jib length (m)	22.85				25.90				28.95			
Tower angle (°) Working radius (m)	90	80	70	60	90	80	70	60	90	80	70	60
8.0	20.0/8.1				18.6/6.7							
9.0	20.0				18.6				15.4/9.4			
10.0	20.0				18.6				15.4			
12.0	20.0				18.6				15.4			
14.0	20.0				18.6				15.4			
15.0	18.6				18.6				15.4			
16.0	17.5	15.9/17.6			17.5				15.4			
18.0	15.5	15.5			15.5	14.9/18.8			15.4	14.0/18.9		
20.0	14.0	14.0			14.0	14.0			14.0	14.0		
22.0	12.5	12.5			12.5	12.5			12.4	12.4		
24.0	11.0	11.0			11.2	11.2			11.2	11.2		
26.0	9.5/24.6	10.5	10.3/26.6		10.2	10.2			10.1	10.1		
28.0		9.9	9.9		8.4/27.5	9.4	9.3/28.3		9.2	9.2	8.0/29.9	
30.0		9.1	9.1			8.8	8.8		8.0	8.0	8.0	
32.0		9.0/30.4	8.5			8.3	8.3		7.4/30.4	7.8	7.8	
34.0			8.1	7.6/34.9		8.1/33.4	8.0			7.5	7.5	
36.0			7.8	7.3			7.8	6.9/36.9		7.1	7.1	
38.0				6.8			7.2	6.7		7.0/36.3	6.8	6.3/39.0
40.0				6.4			7.0/39.0	6.2			6.7	6.1
42.0				6.1/41.2				5.8			6.3/41.9	5.7
44.0								5.5				5.3
46.0								5.4/44.2				5.0
48.0												4.9/47.1

(EC400112)

■ w/36.90m Tower

Jib length (m)	22.85				25.90				28.95				32.00			
Tower angle (°) Working radius (m)	90	80	70	60	90	80	70	60	90	80	70	60	90	80	70	60
8.0	20.0/8.1				18.6/6.7											
9.0	20.0				18.6				15.4/9.4							
10.0	20.0				18.6				15.4				14.6			
12.0	20.0				18.6				15.4				14.6			
14.0	20.0				18.6				15.4				14.6			
15.0	18.6				18.6				15.4				14.6			
16.0	17.5				17.5				15.4				14.6			
18.0	15.5	15.4/18.1			15.5	14.5/19.3			15.4				14.6			
20.0	14.0	14.0			14.0	14.0			14.0	13.6/20.4			14.0	12.7/21.6		
22.0	12.5	12.5			12.5	12.5			12.4	12.4			12.4	12.4		
24.0	11.2	11.2			11.2	11.2			11.2	11.2			11.1	11.1		
26.0	9.6/24.6	10.5	9.7/27.7		10.2	10.2			10.1	10.1			10.1	10.1		
28.0		9.6	9.6		8.5/27.5	9.5	8.8/29.3		9.2	9.2			9.2	9.2		
30.0		8.9	8.9			8.5	8.5		8.1	8.1	7.9/30.9		8.4	8.4		
32.0		8.8/30.9	8.5			8.1	8.1		7.5/30.4	7.8	7.8		7.8	7.8	8.2/32.5	
34.0			8.3			7.9/33.9	7.8			7.5	7.5		6.5/33.4	7.2	7.2	
36.0			7.7	6.9/36.4			7.6			7.0	7.0			7.0	7.0	
38.0			7.4/37.1	6.5			7.1	6.2/38.5		6.9/36.8	6.7			6.5	6.5	
40.0				6.1			6.6	5.9			6.5	5.7/40.5		6.2/39.8	6.1	
42.0				5.7				5.6			6.1	5.4			6.0	5.2/42.5
44.0				5.6/42.8				5.2			5.9/43.0	5.1			5.6	5.0
46.0								5.0/45.7				4.8			5.3/45.9	4.7
48.0												4.5				4.4
50.0												4.4/48.7				4.1
52.0																3.9/51.6

(EC400112)

■ w/39.95m Tower

Jib length (m)	22.85				25.90				28.95				32.00				35.05			
Tower angle (°)	90	80	70	60	90	80	70	60	90	80	70	60	90	80	70	60	90	80	70	60
Working radius (m)																				
8.0	17.5/8.1				16.0/8.7															
9.0	17.5				16.0				15.0/9.4											
10.0	17.5				16.0				15.0				14.0						12.5/10.6	
12.0	17.5				16.0				15.0				14.0						12.5	
14.0	17.5				16.0				15.0				14.0						12.5	
15.0	17.5				16.0				15.0				14.0						12.5	
16.0	17.5				16.0				15.0				14.0						12.5	
18.0	15.5	14.9/18.7			15.5	14.1/19.8			15.0				14.0						12.5	
20.0	14.0	14.0			14.0	14.0			14.0	13.2/21.0			14.0						12.5	
22.0	12.5	12.5			12.5	12.5			12.4	12.4			12.4	12.3/22.1				12.3	11.5/23.2	
24.0	11.3	11.3			11.3	11.3			11.2	11.2			11.1	11.1				11.1	11.1	
26.0	9.7/24.6	10.7			10.2	10.2			10.1	10.1			10.1	10.1				10.0	10.0	
28.0		9.7	9.4/28.7		8.5/27.5	9.6			9.2	9.2			9.2	9.4				9.1	9.1	
30.0		8.8	8.9			8.8	8.7/30.3		7.8	7.8			8.4	8.4				8.4	8.4	
32.0		8.5/31.5	8.4			8.1	8.1		7.5/30.4	7.6	7.6		7.8	7.8	7.4/33.6			7.7	7.7	
34.0			8.0			7.6	7.6			7.4	7.4		6.2/33.4	7.4	7.4			7.1	7.1	6.5/35.2
36.0			7.5			7.5/34.4	7.1			6.9	6.9			6.9	6.9			5.8	6.1	6.1
38.0			7.0	6.2			6.8			6.7/37.4	6.6			6.4	6.4			5.5/36.3	5.7	5.7
40.0			6.9/38.1	5.8			6.4	5.6			6.3			6.0	6.0				5.4	5.4
42.0				5.4			6.2/41.1	5.3			5.9	5.1		5.9/40.3	5.8				5.2	5.2
44.0				5.1				4.9			5.5	4.8			5.4	4.7/44.1			5.1/43.2	5.0
46.0				5.0/44.3				4.7				4.5			5.1	4.4			4.8	4.2/46.1
48.0								4.5/47.2				4.2			5.0/46.9	4.1			4.6	4.0
50.0												4.0				3.9			4.4/49.9	3.7
52.0												4.0/50.2					3.7			3.5
54.0																3.6/53.1				3.3
56.0																				3.1
58.0																				3.1/56.1

(EC400112)

■ w/43.00m Tower

Jib length (m)	22.85				25.90				28.95				32.00				35.05				38.10				
Tower angle (°)	90	80	70	60	90	80	70	60	90	80	70	60	90	80	70	60	90	80	70	60	90	80	70	60	
Working radius (m)																									
8.0	17.5/8.1				16.0/8.7																				
9.0	17.5				16.0				15.0/9.4																
10.0	17.5				16.0				15.0				14.0							11.0/11.3					
12.0	17.5				16.0				15.0				14.0						12.5		11.1				
14.0	17.5				16.0				15.0				14.0						12.5		11.0				
15.0	17.5				16.0				15.0				14.0						12.5		11.0				
16.0	17.5				16.0				15.0				14.0						12.5		11.0				
18.0	15.5	14.6/19.2			15.5				15.0				14.0						12.5		11.0				
20.0	14.0	14.0			14.0	13.7/20.3			14.0	12.8/21.5			14.0						12.5		11.0				
22.0	12.5	12.3			12.5	12.5			12.4	12.4			12.4	12.0/22.6				12.4	11.2/23.8		11.0				
24.0	11.0	11.0			11.3	11.3			11.2	11.2			11.2	11.3				11.1	11.1		11.0	10.5/24.9			
26.0	9.7/24.6	10.5			10.2	10.2			10.2	10.2			10.1	10.2				10.0	10.0		10.0	10.0			
28.0		9.5	8.9/29.8		8.9/27.5	9.5			9.3	9.3			9.2	9.3				9.1	9.1		9.1	9.1			
30.0		8.8	8.8			8.7	8.2/31.4		7.9	8.1			8.5	8.5				8.4	8.4		8.3	8.3			
32.0		8.1	8.1			8.0	8.0		7.3/30.4	7.9	7.8/33.0		7.4	7.9				7.7	7.7		7.7	7.7			
34.0			7.8			7.4	7.4			7.4	7.4		6.3/33.4	7.3	7.3/34.6			7.2	7.2		7.1	7.1			
36.0			7.2			7.3/34.9	7.1			6.8	6.8			6.8	6.8			5.8	6.5	6.4/36.7	6.6	6.6	6.0/38.0		
38.0			6.7	5.9/39.5			6.6			6.3/37.9	6.5			6.3	6.4			5.8/36.3	6.1	6.1		5.9	5.9	5.9	
40.0			6.5/39.2	5.4			6.2	5.0/41.2			6.0			5.9	5.9				5.8	5.8		4.8/39.3	5.6	5.6	
42.0				5.1			5.8	4.9			5.7	4.5/43.6		5.7/40.8	5.6				5.4	5.4		5.4	5.3		
44.0				4.8			5.8/42.1	4.8			5.3	4.5			5.2	4.8/45.6			5.1/43.8	5.1		5.3	5.0		
46.0				4.6/45.8				4.3			5.2/45.0	4.2			4.9	4.1				4.6	3.7/47.6		4.7	4.7	
48.0								4.1				3.9			4.6	3.8				4.5	3.7		4.6/48.7	4.4	3.4/50.7
50.0								4.0/48.8				3.7				3.6				4.2	3.4			4.1	3.3
52.0												3.5/51.7								4.1/50.9	3.2			3.9	3.1
54.0																				3.8				3.7/52.9	2.9
56.0																				3.6					2.7
58.0																				3.5/54.7					2.5
60.0																					2.9				2.4
62.0																									2.3/61.5

(EC400112)

■ w/46.05m Tower

Jib length (m)	22.85				25.90				28.95				32.00				35.05				38.10				41.15			
(Tower angle)	90	80	70	60	90	80	70	60	90	80	70	60	90	80	70	60	90	80	70	60	90	80	70	60	90	80	70	
Working radius (m)																												
8.0	17.541				16.081																							
9.0	17.5				16.0																							
10.0	17.5				16.0							15.094																
12.0	17.5				16.0							15.0																
14.0	17.5				16.0							15.0																
15.0	17.5				16.0							15.0																
16.0	17.5				16.0							15.0																
18.0	15.5	14.2197			15.5							15.0																
20.0	14.0	14.0			14.0	13.3203						14.0																
22.0	12.5	12.3			12.5	12.5						12.4	12.4															
24.0	11.0	11.0			11.3	11.3						11.2	11.2															
26.0	9.5246	10.2			10.2	10.2						10.2	10.2															
28.0		9.5			8.3273	9.4						9.3	9.3															
30.0		8.7	8.4008			8.6						7.9	8.2															
32.0		8.0	8.0			7.9	7.8324					7.3304	7.8															
34.0		7.3325	7.5			7.3	7.3					7.2	7.2															
36.0		7.0				6.9353	6.9					6.7	6.7															
38.0		6.5				6.4						6.3	6.2															
40.0		6.1	5.0410			6.0						6.2	6.1															
42.0		5.1402	4.8			5.6	4.5450					5.5																
44.0		4.5				5.4431	4.3					5.1	4.0451															
46.0		4.2				4.1						4.8	3.9															
48.0		4.0473				3.8						4.8461	3.7															
50.0						3.6						3.4																
52.0												3.2																
54.0												3.1532																
56.0																												
58.0																												
60.0																												
62.0																												
64.0																												

(EC400112)

■ w/49.10m Tower

Jib length (m)	22.85				25.90				28.95				32.00				35.05				38.10				41.15			44.20		
(Tower angle)	90	80	70	60	90	80	70	60	90	80	70	60	90	80	70	60	90	80	70	60	90	80	70	60	90	80	70	90	80	70
Working radius (m)																														
8.0	17.081				16.087																									
9.0	17.0				16.0							15.094																		
10.0	17.0				16.0							15.0																		
12.0	17.0				16.0							15.0																		
14.0	17.0				16.0							15.0																		
15.0	17.0				16.0							15.0																		
16.0	17.0				16.0							15.0																		
18.0	15.5				15.5							15.0																		
20.0	14.0	13.7203			14.0	12.9214						14.0																		
22.0	12.5	12.5			12.5	12.5						12.4	12.225																	
24.0	11.1	11.3			11.3	11.2						11.2	11.1																	
26.0	9.5246	10.3			10.2	10.1						10.2	10.0																	
28.0		9.3			8.3273	9.2						9.3	9.1																	
30.0		8.6	7.9319			8.5						8.0	8.4																	
32.0		7.9	7.9			7.8	7.3335					7.3304	7.7																	
34.0		7.3325	7.3			7.2	7.1					7.1	6.7351																	
36.0		6.8				6.7	6.6					6.6	6.5																	
38.0		6.3				6.2						6.2	6.0																	
40.0		5.9				5.8						6.0383	5.6																	
42.0		5.7412	4.4425			5.4						5.2																		
44.0		4.2				5.1	3.8448					4.9																		
46.0		3.9				5.0442	3.8					4.6	3.7465																	
48.0		3.7				3.5						4.5471	3.4																	
50.0						3.3						3.1																		
52.0												2.9																		
54.0												2.7																		
56.0												2.7																		
58.0												2.4																		
60.0												2.3577																		
62.0																														

(EC400112)

■ w/52.15m Tower

Jib length (m)	22.85				25.90				28.95				32.00				35.05			38.10			41.15			44.20					
(Tower angle Working radius (m))	90	80	70	60	90	80	70	60	90	80	70	60	90	80	70	60	90	80	70	90	80	70	90	80	70	90	80	70	90	80	70
8.0	15.081				18.087																										
9.0	17.0				18.0				15.094																						
10.0	17.0				18.0				15.0				14.0				12.510.6			11.011.3			9.511.9								
12.0	17.0				18.0				15.0				14.0				12.5			11.0			9.5				8.012.2				
14.0	17.0				18.0				15.0				14.0				12.5			11.0			9.5				8.0				
15.0	17.0				18.0				15.0				14.0				12.5			11.0			9.5				8.0				
16.0	17.0				18.0				15.0				14.0				12.5			11.0			9.5				8.0				
18.0	15.5				15.5				15.0				14.0				12.5			11.0			9.5				8.0				
20.0	14.0	13.320.8			14.0	12.321.3			14.0				13.9				12.5			11.0			9.5				8.0				
22.0	12.5	12.4			12.5	12.3			12.4	11.523.1			12.4				12.4			11.0			9.5				8.0				
24.0	11.1	11.2			11.3	11.0			11.2	10.9			11.2	10.724.2			11.1	10.025.4		11.0			9.3				7.9				
26.0	9.824.6	10.1			10.2	10.0			10.2	9.9			10.1	9.8			10.1	9.7		10.0	9.426.5		8.6	8.127.6			7.2				
28.0		9.2			9.27.5	9.1			9.3	9.0			9.2	8.9			9.2	8.8		9.1	8.7		8.0	8.0			6.7	6.529.1			
30.0		8.4			8.3				8.0	8.2			8.5	8.2			8.4	8.0		8.4	8.0		7.4	7.4			6.2	6.2			
32.0		7.8	13.321.5		7.7				7.830.4	7.6			7.8	7.5			7.7	7.4		7.7	7.3		6.9	6.9			5.7	5.8			
34.0		7.333.8	7.0		7.1	6.734.5			7.0				6.333.4	6.9			7.2	6.8		7.1	6.7		6.4	6.4			5.3	5.4			
36.0			6.5		6.6	6.3			6.5	6.236.1			6.4	6.737.7			6.0	5.6		5.9	6.3		5.9	5.9			4.9	5.1			
38.0			6.0		6.335.5	5.9			6.1	5.7			6.0	5.6			6.038.1	5.9	5.239.4		6.0	5.8		5.5	5.5			4.6	4.8		
40.0			5.6			5.5			5.836.5	5.4			5.6	5.2			5.5	5.1		4.839.3	5.4	4.941.0		5.1	5.1			4.2	4.5		
42.0			5.3			5.1			5.0				5.3	4.9			5.2	4.8		5.1	4.6		4.4	4.6	4.442.6		3.9	4.2			
44.0			5.242.5	3.8		4.8			4.7				5.242.1	4.6			4.8	4.4		4.8	4.3		4.242.2	4.4	4.2	3.6	4.0	4.044.2			
46.0				3.6		4.745.2	3.446.1		4.4				4.3				4.645.4	4.2		4.5	4.1		4.3	3.9	3.445.2	3.8	3.8				
48.0				3.4			3.1		4.1	2.948.1			4.0						3.9	4.2	3.8		4.1	3.7		3.6	3.6				
50.0				3.1			2.9		4.148.2	2.7			3.8	2.650.2					3.7	4.248.3	3.6		3.9	3.5	3.5	3.3					
52.0				3.150.4			2.7			2.5			3.751.1	2.3					3.5		3.4	3.451.3	3.3	3.4	3.1						
54.0							2.653.3			2.3				2.2					3.3		3.2		3.1		3.1	3.3	2.9				
56.0										2.2				2.0				3.354.1			3.0			2.9		3.154.2	2.7				
58.0														1.9							2.957.0			2.7			2.6				
60.0																	1.859.2							2.6				2.4			
62.0																													2.2		
64.0																														2.162.9	

(EC400112)

Notes:

- Capacities included in these charts are the maximum allowable, and are based on machine standing level on firm supporting surface under ideal job conditions.
- Capacities are in metric tons, and are not more than based on 78% of minimum tipping loads except the figures surrounded by bold lines which are based on the other factor of machine structural strength limitation
- Capacities are based on freely suspended loads and make no allowance for such factors as the effect of wind sudden stopping of loads, supporting surface conditions and operating speeds. Operator must reduce load ratings to take such conditions into account. Deduction from rated capacities must be made for weight of hook block, weighted ball/hook, sling, spreader bar, or other suspended gear. Hook block weight is as follows:
30t.....0.73ton 11t.....0.40ton
- A 45.0ton counterweight and 1.5ton auxiliary weight (or opt. 3rd drum winch) are required.
- All capacities are rated for 360° swing.
- Least stable rated condition is over the side
- Attachment must be erected and lowered over the front of the crawler mounting.
- Working radii shown above are at loading condition
- The machine can be steplessly operated at tower angle between 60 and 90 degrees safely; towercrane capacities available under any tower angle are automatically set up by a computerized automatic over-load preventing system, Model SML-10
- The machine must be operated in accordance with correct tower boom and jib combination shown right
- Capacities under single part hoist line are detailed, if required, please consult us, or nearest distributor

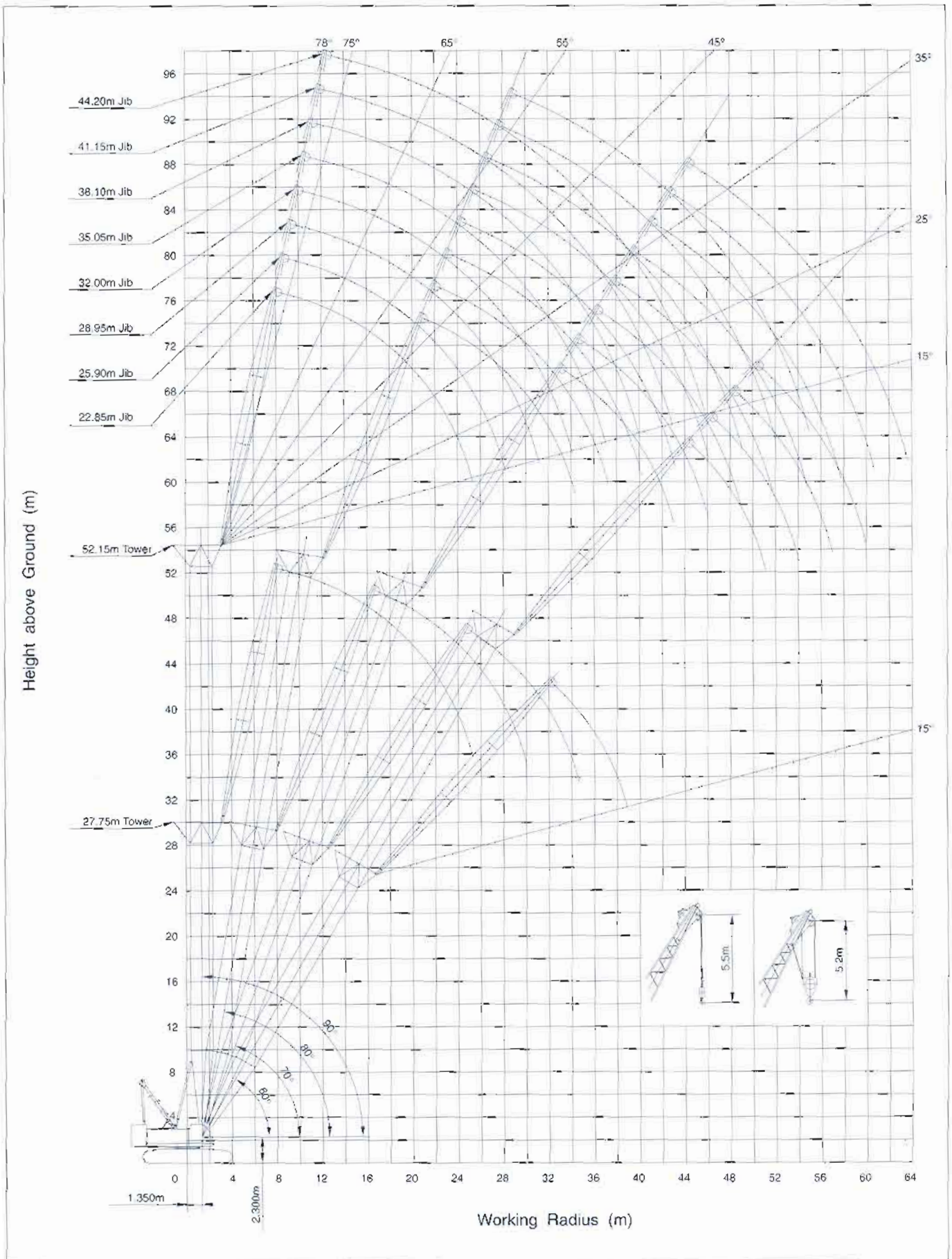
■ Combination Table

Jib length (m)	Tower length (m)							
	22.85	25.90	28.95	32.00	35.05	38.10	41.15	44.20
27.75	⊙	×	×	×	×	×	×	×
30.80	⊙	⊙	×	×	×	×	×	×
33.85	⊙	⊙	⊙	×	×	×	×	×
36.90	⊙	⊙	⊙	⊙	×	×	×	×
39.95	⊙	⊙	⊙	⊙	⊙	×	×	×
43.00	⊙	⊙	⊙	⊙	⊙	⊙	×	×
46.05	⊙	⊙	⊙	⊙	⊙	⊙	⊙	×
49.10	⊙	⊙	⊙	⊙	⊙	⊙	⊙	⊙
52.15	⊙	⊙	⊙	⊙	⊙	⊙	⊙	⊙

Notes:

- The meaning of symbols shown in the above table is as follows,
- Symbol of "⊙": Possible to luff tower between 90° thru 60°;
 - Symbol of "⊙": Possible to luff tower between 90° thru 70°;
 - Symbol of "×": Impossible to make any of tower boom and jib combination

Luffing Towercrane Working Ranges



Liftcrane Capacities

■ w/0.91m & 2.13m Special Tower Boom Extensions

Boom length (m) Working radius (m)	15.25	18.30	21.35	24.40	27.45	30.50	33.50	36.55	39.60	42.65	45.70	48.75	51.80	54.85	57.90	60.95	64.00	67.05	70.10	73.15	
4.5	120.0																				
5.0	117.0	105.5/5.1																			
5.5	107.1	103.6	93.8/5.6																		
6.0	98.7	98.1	92.2	83.8/6.1	73.9/6.7																
7.0	85.3	84.7	84.5	80.4	73.0	65.9/7.2	59.5/7.7														
8.0	71.9	71.7	71.7	71.6	70.3	64.1	58.9	53.4/8.3	48.4/8.8												
9.0	60.0	59.8	59.8	59.7	59.7	59.6	57.0	52.3	48.1	43.6/9.3	39.6/9.8										
10.0	51.4	51.2	51.1	51.0	51.0	50.9	50.8	50.1	46.8	42.8	39.4	33.0/10.4	32.0/10.9	29.1/11.4							
12.0	39.8	39.5	39.4	39.3	39.3	39.2	39.0	39.0	38.8	38.8	37.6	33.0	31.2	28.7	26.3	22.0/12.5	21.4/13.1	19.3/13.6			
14.0	32.3	31.9	31.8	31.7	31.7	31.6	31.4	31.3	31.2	31.2	31.0	31.0	29.9	27.5	25.2	22.0	21.0	19.1	17.4/14.1	15.7/14.6	
16.0	30.0/14.8	26.7	26.6	26.4	26.4	26.2	26.1	26.0	25.8	25.8	25.7	25.6	25.5	25.3	24.1	22.0	20.1	18.4	16.7	15.2	
18.0		24.0/17.4	22.7	22.5	22.4	22.3	22.1	22.1	21.9	21.9	21.7	21.6	21.5	21.4	21.2	21.1	19.3	17.6	16.1	14.6	
20.0			19.8	19.6	19.5	19.4	19.2	19.1	19.0	18.9	18.7	18.6	18.5	18.3	18.1	18.1	18.0	16.9	15.2	13.4	
22.0				17.3	17.2	17.0	16.9	16.8	16.5	16.4	16.4	16.2	16.0	15.9	15.7	15.7	15.5	15.4	13.9	12.2	
24.0				16.7/22.7	15.3	15.1	14.9	14.8	14.6	14.5	14.4	14.3	14.1	13.9	13.7	13.7	13.6	13.4	12.8	11.1	
26.0					14.3/25.3	13.5	13.4	13.3	13.0	12.9	12.8	12.7	12.6	12.3	12.1	12.1	11.9	11.7	11.6	10.2	
28.0						12.3	12.0	11.9	11.7	11.6	11.4	11.3	11.2	11.0	10.7	10.7	10.6	10.4	10.2	9.4	
30.0							10.9	10.8	10.5	10.4	10.2	10.1	10.0	9.8	9.6	9.6	9.5	9.3	9.1	8.6	
32.0							10.6/30.6	9.8	9.5	9.4	9.2	9.1	9.0	8.8	8.6	8.6	8.4	8.2	8.1	7.9	
34.0								9.3/33.2	8.7	8.6	8.4	8.3	8.1	7.9	7.7	7.7	7.5	7.3	7.2	7.0	
36.0									8.0/35.9	7.8	7.7	7.5	7.3	7.2	6.9	6.9	6.7	6.5	6.4	6.2	
38.0										7.2	7.0	6.8	6.7	6.5	6.3	6.2	6.0	5.8	5.7	5.5	
40.0										7.0/38.5	6.4	6.3	6.1	5.9	5.7	5.6	5.4	5.2	5.0	4.8	
42.0											6.1/41.1	5.7	5.6	5.4	5.1	5.0	4.8	4.5	4.3	4.1	
44.0												5.3/43.8	5.1	4.9	4.6	4.5	4.3	4.0	3.8	3.6	
46.0													4.6/46.4	4.4	4.1	4.0	3.8	3.5	3.3	3.1	
48.0														4.0	3.7	3.5	3.3	3.0	2.8	2.6	
50.0															3.7/49.1	3.3	3.1	2.9	2.6	2.4	2.2
52.0																2.9/51.7	2.8	2.5	2.3	2.1	
54.0																	2.4	2.2			
56.0																		2.2/54.1			

(EC400101)

Notes — Liftcrane capacities

- Capacities included in this chart are the maximum allowable, and are based on machine standing level on firm supporting surface under ideal job conditions.
- Capacities are in metric tons, and are not more than 75% of minimum tipping loads except the figures surrounded by bold lines which are based on other factor of machine structural strength limitation
- Capacities are based on freely suspended loads and make no allowance for such factors as the effect of wind, sudden stopping of loads, supporting surface conditions, and operating speeds. Operator must reduce load ratings to take such conditions into account. Deduction from rated capacities must be made for weight of hook block, weighted ball/hook, sling, spreader bar, or other suspended gear.
Hook block weight is as follows:
120t 1.4ton 50t 0.9ton 30t 0.73ton
11t 0.4ton
- All capacities are rated for 360° swing.
- Least stable rated condition is over the side.
- Counterweight must be 45.0ton for all capacities on this chart together with 1.5ton auxiliary weight (or opt. 3rd drum winch)
- Attachment must be erected and lowered over the ends of the crawler mounting.
- Main boom length must not exceed 73.15m.
Maximum fly jib length permitted—24.40m.
Maximum boom and fly jib combination length permitted—60.95m+24.40m/64.00m+18.30m
Maximum boom length when mounting auxiliary short jib is 70.10m.

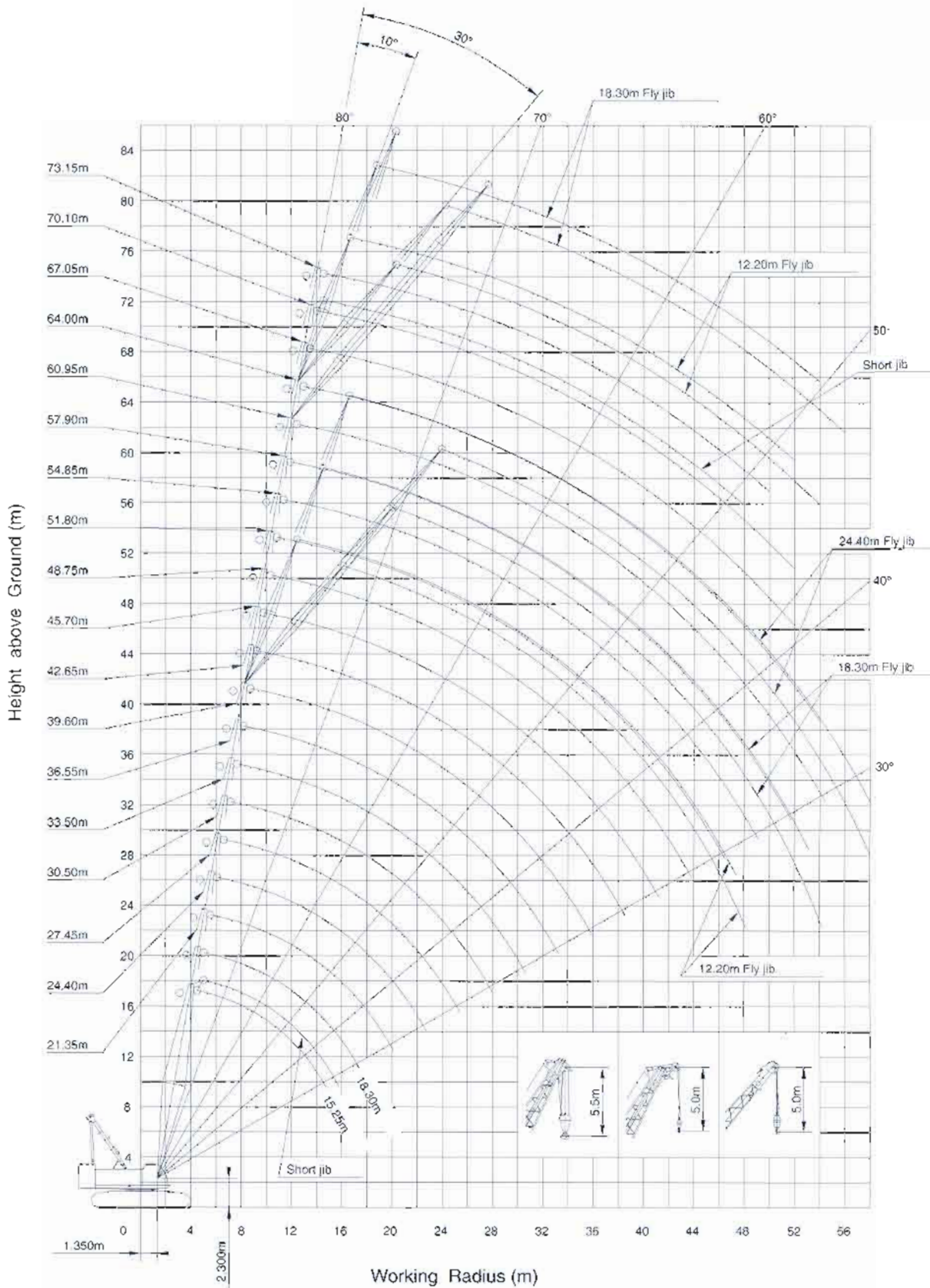
- Capacities when handling load off main boom head sheaves in case of mounting fly jib or auxiliary short jib on top of boom are detailed; if required, please consult us or nearest distributor.

- Boom configuration of max. 73.15m liftcrane boom in a case of converting luffing towercrane boom of max. 52.15m must be as follows:

- 7 60m bottom section
- 0 90m boom ext (special type)
- 2.15m boom ext (special type)
- 3.05m boom ext. (conventional type)
- 6 10m boom ext. (conventional type)
- 9 15m boom ext (conventional type)
- 9 15m boom ext (with expanded metal)
- 9.15m boom ext. (conventional type)
- 9.15m boom ext (conventional type as add boom)
- 9.15m boom ext. (conventional type as add. boom)
- 7.60m crane top section (as add. boom)

Total: 73.15m with 11 sections

Liftcrane Working Ranges





Specifications subject to change without notice

(1300 65 8888)

Website: www.btequipment.com.au

		Phone	Fax
BRISBANE	10-14 Ashover Road, Rocklea. Qld 4106	(07) 3373 6400	(07) 3875 1680
SYDNEY	6 Ferngrove Place, South Granville. NSW 2142	(02) 9780 7200	(02) 9780 7290
MELBOURNE	80-86 Frankston-Dandenong Road, Dandenong. Vic 3175	(03) 9554 0300	(03) 9554 0398
ADELAIDE	908 Main North Road, Mawson Lakes. SA 5095	(08) 8262 8292	(08) 8262 8320
PERTH	50 Great Eastern Highway, South Guildford. WA 6055	(08) 9478 0600	(08) 9478 0688

Address Inquires to: