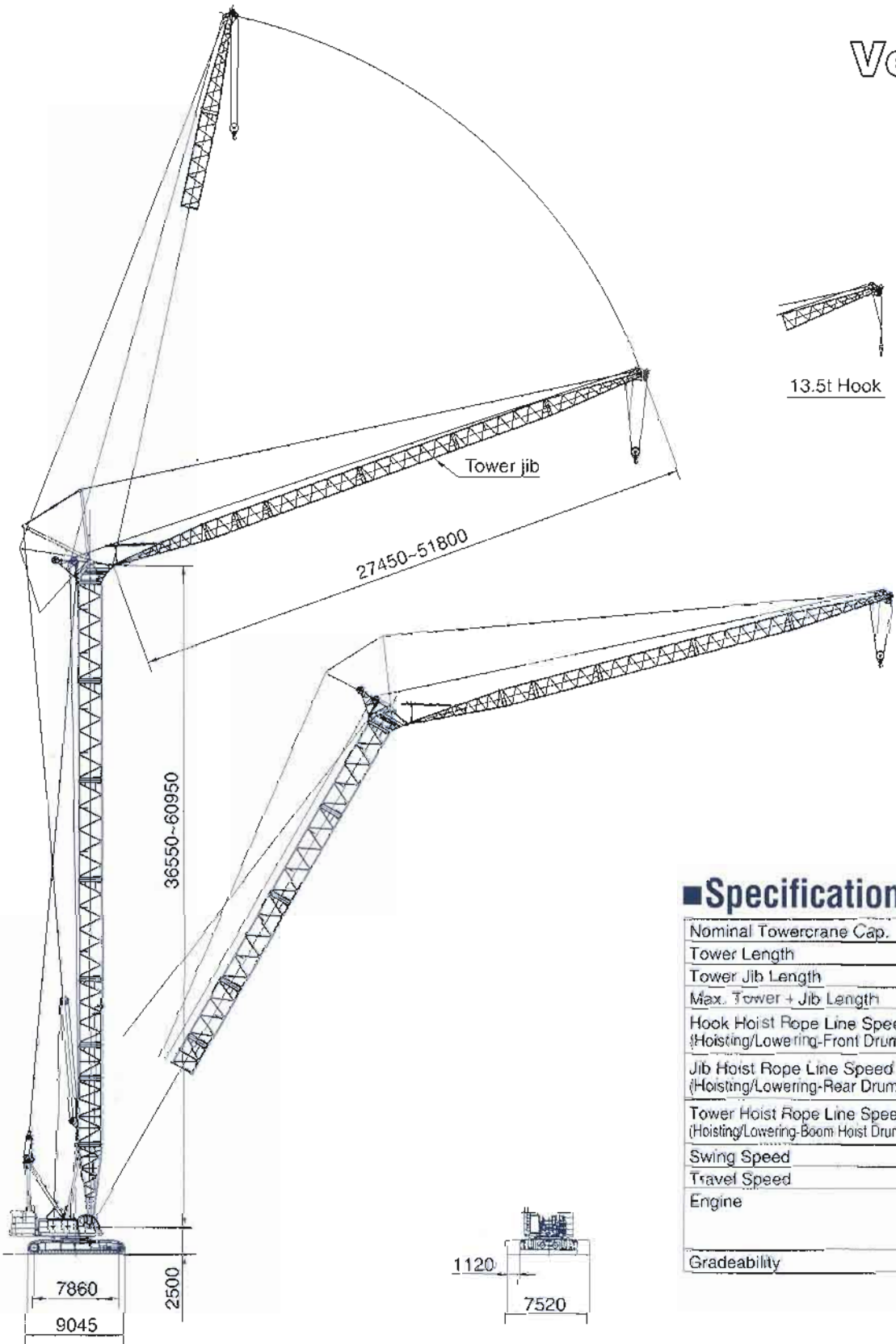


SCX2500



250-M ton Hydraulic Crawler Crane
Luffing Towercrane Att.

Version A



■ Specification

Nominal Towercrane Cap.	25.0 t × 18.0 m
Tower Length	36.55 m~60.95 m
Tower Jib Length	27.45 m~51.80 m
Max. Tower + Jib Length	60.95 m + 51.80 m
Hook Hoist Rope Line Speed (Hoisting/Lowering-Front Drum)	120~2.0 m/min
Jib Hoist Rope Line Speed (Hoisting/Lowering-Rear Drum)	51~2.0 m/min
Tower Hoist Rope Line Speed (Hoisting/Lowering-Boom Hoist Drum)	(24~1.0 m/min) × 2
Swing Speed	1.7 min. ⁻¹ < 1.7 rpm >
Travel Speed	1.2/0.8 km/hr
Engine	Mitsubishi 6D24-TL 235kW/2,000min. ⁻¹ < 320 ps/2,000rpm >
Gradeability	17° (30%)

Luffing Towercrane 25 metric tons

TOWER BOOM:

- Lattice construction, round tubular main chords, alloy, hi-ten steel, with bracing of round steel tubing.
- Tower boom connections In-line pin connections at 2.10m deep by 2.10m wide.
- Special tower boom extensions 6.10m long, lattice construction; mounts tower jib bail assembly on upper part, and just pinned next to 7.60m bottom section. Available to use as liftcrane boom extension. Also, 9.15m long special tower boom extension is available.
- Tower boom extensions Available in length 3.05m, 6.10m and 9.15m with tower boom/tower jib hoist pendants. Available to use as liftcrane boom extension.
- Tower head section 1.50m long, lattice construction; pinned on top of tower boom. This section pins tower jib and fan-shaped post, and provides one guide sheaves for hoist cable and two guide rollers for tower jib hoist pendant ropes.
- Tower boom length 36.55m to 60.95m, the configuration of a 60.95m tower boom as maximum is as under:
(1) 7.60m heavy-duty tower bottom section × 1 pce. (2) 6.10m special heavy-duty boom extension × 1 pce. (3) 9.15m special heavy-duty boom extension × 1 pce. (4) 3.05m heavy-duty boom extension × 1 pce. (5) 6.1m heavy-duty boom extension × 1 pce. (6) 9.15m heavy-duty boom extension × 3 pcs. (7) 1.50m tower head section × 1 pce.
- Tower boom luffing angle 90° thru 60° steplessly.

Note:

- Bottom section of 7.60m long and boom extensions of 3.05m, 6.10m and 9.15m long as necessary to complete liftcrane boom attachment are available from those of luffing towercrane boom attachment.
- In case of converting luffing towercrane boom attachment of 60.95m as max. to liftcrane boom attachment 88.40m as maximum as available, four items of each one of 4.55m tapered boom extension, 6.10m light-duty boom extension, 9.15m light-duty boom extension and 9.15m light-duty tapered top section are only additionally required.

TOWER JIB:

- Lattice construction, round tubular main chords, alloy hi-ten steel, with bracing of round steel tubing.
- Tower jib connections In-line pin connections at 1.55m deep by 1.55m wide.
- Basic tower jib Three-pieces, 27.45m basic length; 9.15m bottom section, one 9.15m light-duty boom extension and 9.15m light-duty tapered top section.
- Tower jib top head machinery Single head and one guide sheaves mounted on anti-friction bearings.
- Tower jib extensions Available in 3.05m, 6.10m and 9.15m lengths with pendants.
- Maximum tower jib length 51.80m; a 51.80m tower jib as maximum is as per following combination. (1) 9.15m light-duty tower jib bottom section × 1 pce. (2) 3.05m light-duty boom extension × 2 pcs. (3) 9.15m light-duty boom extension × 3 pcs. (4) 9.15m light-duty tower jib top section × 1 pce.
- Tower boom luffing angle Available from 15° thru 75° (to ground).

FAN-SHAPED POST:

All-welded construction; pinned to tower head section. This serves as mechanical connection for tower jib hoisting and lowering motions.

TOWER JIB BAIL AND BRIDLE:

All-welded construction; provided with larger sheaves of a 22.9 D/d ratio on both bail and bridle for 8-part tower jib hoist rope reeving. Bail mounted on 6.10m special tower boom extensions, and bridle suspended between an 8-part tower jib hoist rope and pendant ropes connecting to tower post.

HOOK BLOCKS:

To be selected from 35/25ton and 13.5ton hook blocks (as same as those of the HOOK BLOCKS mentioned in to "Crane 250 metric tons" of separate SCX2500 SPECIFICATIONS).

DRUM DATA:

See DRUM DATA mentioned into page 7 of separate SCX2500 SPECIFICATIONS. In case that machine is operated under luffing towercrane attachment, rope line speed of rear main drum (as used for tower jib hoisting/lowering motion) must be changed to "51-2.0m/min".

HOIST REEVING:

No. of part line	Towercrane hoist	
	2	1
Max. load (ton)	25.0	13.5

CABLES:

- Front drum P-S (19)+39×P7, non-spin type, 28mm dia./410m long, breaking load 755kN (77.0t).
- Rear drum IWRC 6×P-WS (31), 28mm dia., breaking load 657kN(67.0t). Length of cable is as under:
With liftcrane application w/aux. short jib 180m.
With liftcrane application w/fly jib and aux short jib 300m.
- Boom hoist drum Same as that of liftcrane application.

Note: When converting luffing towercrane att. to liftcrane application, these rear drum cables of IWRC 6×P-WS (31) specification shown above are only available to use under aux. short jib/fly jib applications

WORKING WEIGHT:

Approx. 225ton with 60.95m tower boom, 51.80m tower jib, 86.3ton counterweight, 1.7ton aux. weight, 14.0ton carbody weight, 1,120mm wide track shoes and 35/25t hook block.

GROUND PRESSURE:

121kPa <1.23kg/cm²> under a 225ton working weight mentioned above.

Luffing Towercrane Capacities

■ w/36.55m Tower

Jib length (m)	27.45				30.50			
	90	80	70	60	90	80	70	60
10.0	25.0/10.8				25.0/11.6			
12.0	25.0				25.0			
14.0	25.0				25.0			
16.0	25.0				25.0			
18.0	25.0				24.2			
20.0	24.1	23.4/21.5			23.3			
22.0	23.1	23.1			22.4	21.7/22.8		
24.0	20.5	20.5			20.7	20.7		
26.0	18.3	18.3			18.4	18.4		
28.0	15.7	16.5			16.6	16.6		
30.0	13.7/28.7	15.0	14.1/31.5		15.0	15.0		
32.0		13.8	13.8		12.0/31.6	13.7	13.0/33.3	
34.0		12.7	12.7			12.6	12.6	
36.0		11.9/35.7	11.8			11.7	11.7	
38.0			11.0			10.8	10.8	
40.0			10.3	10.0/40.7		10.6/38.6	10.1	
42.0			9.7/41.7	9.6			9.5	9.2/42.8
44.0				9.1			8.9	8.9
46.0				8.6			8.7/44.7	8.4
48.0				8.3/47.4				7.9
50.0								7.5
52.0								7.4/50.3

(EC401059)

■ w/39.60m Tower

Jib length (m)	27.45				30.50				33.50			
	90	80	70	60	90	80	70	60	90	80	70	60
10.0	25.0/10.8				25.0/11.6							
12.0	25.0				25.0				25.0/12.4			
14.0	25.0				25.0				25.0			
16.0	25.0				25.0				24.2			
18.0	25.0				24.2				23.4			
20.0	24.1				23.3				22.6			
22.0	23.1	23.1			22.4	21.3/23.3			21.8			
24.0	20.5	20.5			20.7	20.7			21.0	20.2/24.6		
26.0	18.2	18.2			18.4	18.4			18.6	18.6		
28.0	15.9	16.4			16.5	16.5			16.7	16.7		
30.0	13.6/28.7	15.0			15.0	15.0			15.1	15.1		
32.0		13.7	13.4/32.8		11.8/31.6	13.7			13.8	13.8		
34.0		12.6	12.6			12.6	12.4/34.3		11.8	12.7		
36.0		11.7	11.7			11.6	11.6		10.8/34.4	11.7	11.7/36.1	
38.0		11.6/36.2	10.9			10.8	10.8			10.9	10.9	
40.0			10.2			10.3/39.2	10.0			10.1	10.1	
42.0			9.6	9.5/42.2			9.4			9.5	9.5	
44.0			9.4/42.8	9.0			8.8	8.7/44.4		9.4/42.1	8.9	
46.0				8.5			8.4/45.7	8.3			8.3	8.2/48.5
48.0				8.1				7.8			7.9	7.9
50.0				7.9/48.9				7.4			7.7/48.7	7.4
52.0								7.1/51.8				7.0
54.0												6.7
56.0												6.6/54.8

(EC401059)

■ w/42.65m Tower

Jib length (m)	27.45				30.50				33.50				36.55			
Tower angle (°)	90	80	70	60	90	80	70	60	90	80	70	60	90	80	70	60
Working radius (m)	90	80	70	60	90	80	70	60	90	80	70	60	90	80	70	60
10.0	25.0/10.8				25.0/11.6											
12.0	25.0				25.0				25.0/12.4				23.6/13.2			
14.0	25.0				25.0				25.0				23.3			
16.0	25.0				25.0				24.2				22.6			
18.0	25.0				24.2				23.4				21.9			
20.0	24.1				23.3				22.6				21.2			
22.0	23.1	22.4/22.5			22.4	20.8/23.8			21.8				20.5			
24.0	20.4	20.4			20.6	20.6			20.9	19.6/25.1			19.8			
26.0	18.2	18.2			18.3	18.3			18.6	18.6			18.6	18.2/26.4		
28.0	16.3	16.4			16.5	16.5			16.6	16.6			16.6	16.6		
30.0	13.7/28.7	14.9			14.9	14.9			15.1	15.1			15.0	15.0		
32.0		13.7	12.8/33.6		12.0/31.6	13.6			13.8	13.8			13.7	13.7		
34.0		12.6	12.6			12.5	11.8/35.4		12.0	12.6			12.5	12.5		
36.0		11.7	11.7			11.6	11.6		11.0/34.4	11.7	11.2/37.1		11.6	11.6		
38.0		11.4/36.7	10.9			10.7	10.7			10.8	10.8		9.7/37.3	10.7	10.3/38.9	
40.0			10.2			10.1/39.7	10.0			10.1	10.1			9.9	9.9	
42.0			9.5	9.1/43.7			9.4			9.4	9.4			9.3	9.3	
44.0			9.0/43.8	9.0			8.8	8.3/45.9		9.2/42.6	8.8			8.7	8.7	
46.0				8.5				8.3			8.3			8.2/45.6	8.1	
48.0				8.0			8.1/46.8	7.8			7.8	7.8			7.6	
50.0				7.6				7.4			7.5/49.7	7.4			7.2	7.2/50.2
52.0				7.5/50.4				7.0				7.0			6.8	6.8
54.0								6.7/53.4				6.6			6.7/52.7	6.4
56.0												6.3				6.1
58.0												6.3/56.3				5.8
60.0																5.6/59.2

(EC401059)

■ w/45.70m Tower

Jib length (m)	27.45				30.50				33.50				36.55				39.60				
Tower angle (°)	90	80	70	60	90	80	70	60	90	80	70	60	90	80	70	60	90	80	70	60	
Working radius (m)	90	80	70	60	90	80	70	60	90	80	70	60	90	80	70	60	90	80	70	60	
10.0	25.0/10.8				25.0/11.6																
12.0	25.0				25.0				25.0/12.4				25.4/13.2								
14.0	25.0				25.0				24.8				23.1							21.6	
16.0	25.0				25.0				24.0				22.4							21.0	
18.0	25.0				24.2				23.2				21.7							20.4	
20.0	24.1				23.3				22.4				21.0							19.8	
22.0	23.1	21.6/23.1			22.4				21.6				20.3							19.2	
24.0	20.4	20.4			20.6	20.1/24.4			20.8	18.8/25.7			19.6							18.6	
26.0	18.1	18.1			18.3	18.3			18.5	18.5			18.5	17.6/26.9						18.0	
28.0	16.3	16.3			16.4	16.4			16.6	16.6			16.6	16.6						16.5	16.3/28.2
30.0	13.9/28.7	14.9			14.9	14.9			15.0	15.0			15.0	15.0						14.9	14.9
32.0		13.6			12.2/31.6	13.6			13.7	13.7			13.6	13.6						13.6	13.6
34.0		12.5	12.2/34.7			12.5			12.1	12.6			12.5	12.5						12.4	12.4
36.0		11.6	11.6			11.5	11.3/36.4		11.1/34.4	11.6			11.5	11.5						11.5	11.5
38.0		11.1/37.3	10.8			10.7	10.7			10.8	10.7/38.2		9.8/37.3	10.6	9.9/39.3					10.6	10.6
40.0			10.1			9.9	9.9			10.0	10.0			9.9	9.9					9.0	9.8
42.0			9.5			9.9/40.2	9.3			9.4	9.4			9.2	9.2					8.8/40.2	9.2
44.0			8.9	8.6/45.3			8.7			9.0/43.2	8.8			8.8	8.6					8.6	8.6
46.0			8.7/44.9	8.4			8.2	7.9/47.4			8.2			8.1	8.1					8.0	8.0
48.0				8.0			7.8/47.8	7.7			7.8	7.4/49.6		6.1/46.1	7.6					7.5	7.5
50.0				7.6				7.3			7.3	7.3			7.1	6.8/51.7				7.3/49.1	7.1
52.0				7.2/51.9				6.9			7.2/50.8	6.9			6.7	6.7				6.7	6.3/53.9
54.0								6.6				6.6			6.4/53.7	6.4				6.3	6.3
56.0								6.4/54.9				6.3			6.0	6.0				6.0	6.0
58.0												6.0/57.8			5.7	5.7				5.9/56.7	5.7
60.0															5.4	5.4					5.4
62.0																					5.1
64.0																					4.9/63.7

(EC401059)

■ w/48.75m Tower

Jib length (m)	27.45				30.50				33.50				36.55				39.60				42.65			
Tower angle (°)	90	80	70	60	90	80	70	60	90	80	70	60	90	80	70	60	90	80	70	60	90	80	70	60
Working radius (m)	90	80	70	60	90	80	70	60	90	80	70	60	90	80	70	60	90	80	70	60	90	80	70	60
10.0	25.0/10.8				25.0/11.6																			
12.0	25.0				25.0				24.9/12.4				23.2/13.2											
14.0	25.0				25.0				24.4				22.7											
16.0	25.0				24.7				23.6				22.0											
18.0	25.0				23.8				22.8				21.3											
20.0	24.1				22.9				22.0				20.6											
22.0	23.1	20.9/23.6			22.2				21.4				20.1											
24.0	20.3	20.3			20.5	19.5/24.9			20.6				19.4											
26.0	18.1	18.1			18.2	18.2			18.5	18.3/26.2			18.5	17.9/27.5										
28.0	16.3	16.3			16.4	16.4			16.5	16.5			16.5	16.5										
30.0	14.1/28.7	14.8			14.8	14.8			15.0	15.0			14.9	14.9										
32.0		13.6			13.5	13.5			13.7	13.7			13.6	13.6										
34.0		12.5	11.7/35.7		12.4	12.4			12.2	12.5			12.4	12.4										
36.0		11.6	11.6		11.5	10.8/37.5			11.2	11.6			11.5	11.5										
38.0		10.8/37.8	10.8		10.6	10.6			10.7	10.3/39.2			10.6	10.6										
40.0			10.1		9.9	9.9			10.0	10.0			9.8	8.5/41.0										
42.0			9.4		9.7/42.7	9.3			9.3	9.3			9.2	9.2										
44.0			8.9			8.7			8.8/43.7	8.7			8.6	8.6										
46.0			8.4/45.9	8.2/45.8		8.2				8.2			8.0	8.0										
48.0				7.9		7.7	7.5/48.9			7.7			7.9/46.6	7.5										
50.0				7.5		7.5/48.9	7.3			7.3	7.1/51.1			7.1										
52.0				7.2			6.9			6.9	6.9/51.6			6.7	6.5/53.2									
54.0				6.9/53.3			6.5			6.5			6.3	6.3										
56.0							6.2			6.2			6.2/54.7	6.0										
58.0							6.2/56.4						5.9											
60.0													5.7/59.3											
62.0																								
64.0																								
66.0																								
68.0																								
70.0																								

(EC401059)

■ w/51.80m Tower

Jib length (m)	27.45				30.50				33.50				36.55				39.60				42.65				45.70			
Tower angle (°)	90	80	70	60	90	80	70	60	90	80	70	60	90	80	70	60	90	80	70	60	90	80	70	60	90	80	70	60
Working radius (m)	90	80	70	60	90	80	70	60	90	80	70	60	90	80	70	60	90	80	70	60	90	80	70	60	90	80	70	60
10.0	25.0/10.8				25.0/11.6																							
12.0	25.0				25.0				24.9/12.4				23.0/13.2															
14.0	25.0				25.0				24.4				22.7															
16.0	25.0				24.7				23.6				22.0															
18.0	25.0				23.8				22.8				21.3															
20.0	24.1				22.9				22.0				20.6															
22.0	23.1				22.0				21.2				19.9															
24.0	20.3	20.2/24.1			20.5	18.9/25.4			20.4				19.2															
26.0	18.0	18.0			18.2	18.2			18.4	17.7/26.7			18.4															
28.0	16.2	16.2			16.3	16.3			16.5	16.5			16.5	16.5														
30.0	14.2/28.7	14.8			14.8	14.8			14.9	14.9			14.9	14.9														
32.0		13.5			13.5	13.5			13.6	13.6			13.5	13.5														
34.0		12.4			12.4	12.4			12.4	12.5			12.4	12.4														
36.0		11.5	11.2/36.8		11.4	11.4			11.3/34.4	11.5			11.4	11.4														
38.0		10.7	10.7		10.6	10.4/38.5			10.7	10.7			10.6/37.3	10.5														
40.0		10.6/38.3	10.0		9.8	9.8			9.9	8.8/40.2			9.8	9.7														
42.0			9.4		9.4/41.3	9.2			9.3	9.3			9.1	9.1														
44.0			8.8			8.6			8.7	8.7			8.5	8.5														
46.0			8.3			8.1			8.4/42.2	8.1			8.0	8.0														
48.0			8.1/47.0	7.8/48.1		7.6			7.7	7.7			7.7/47.2	7.5														
50.0				7.5		7.2/49.9	7.1/50.5		7.2				7.0															
52.0				7.1			6.8		6.8	6.7/52.6			6.6															
54.0				6.8			6.5		6.5	6.7/52.8	6.5		6.3	6.1/54.8														
56.0							6.2		6.2				6.0/56.8	5.9														
58.0							5.8/57.9		5.9				5.6															
60.0									5.6				5.3															
62.0													5.1															
64.0																												
66.0																												
68.0																												
70.0																												
72.0																												
74.0																												

(EC401059)

■ w/54.85m Tower

Jib length (m)	27.45				30.50				33.50				36.55			
Tower angle Working radius (m)	90	80	70	60	90	80	70	60	90	80	70	60	90	80	70	60
10.0	25.0/10.8				25.0/11.6											
12.0	25.0				25.0				24.8/12.4				22.8/13.2			
14.0	25.0				25.0				24.2				22.5			
16.0	25.0				24.5				23.4				21.8			
18.0	24.9				23.6				22.6				21.1			
20.0	23.9				22.7				21.8				20.4			
22.0	22.9				21.8				21.0				19.7			
24.0	20.2	19.4/24.7			20.4				20.2				19.0			
26.0	18.0	18.0			18.1	18.1			18.4	17.2/27.2			18.3			
28.0	16.2	16.2			16.3	16.3			16.4	16.4			16.4	16.0/28.5		
30.0	14.3/28.7	14.7			14.7	14.7			14.9	14.9			14.8	14.8		
32.0		13.5			12.5/31.6	13.4			13.6	13.6			13.5	13.5		
34.0		12.4				12.3			12.4	12.4			12.3	12.3		
36.0		11.5	10.7/37.8			11.4			11.4/34.4	11.5			11.4	11.4		
38.0		10.7	10.7			10.5	10.0/39.5			10.6			10.1/37.3	10.5		
40.0		10.3/38.9	10.0			9.8	9.8			9.9	9.4/41.3			9.7		
42.0			9.3			9.2/41.8	9.2			9.2	9.2			9.1	8.8/43.0	
44.0			8.8				8.6			8.6	8.6			8.5	8.5	
46.0			8.3				8.1			8.4/44.8	8.1			7.9	7.9	
48.0			7.8	7.5/49.8			7.6				7.6			7.5/47.7	7.4	
50.0				7.4			7.2				7.2				7.0	
52.0				7.1			7.0/50.9	6.8			6.8				6.6	
54.0				6.7				6.4			6.5/53.9	6.4/54.1			6.2	
56.0				6.4				6.1				6.1			5.9	5.8/56.3
58.0				6.3/56.5				5.8				5.8			5.8/56.8	5.6
60.0								5.6/59.5				5.5				5.3
62.0												5.3				5.0
64.0												5.2/62.4				4.8
66.0																4.6/65.3

(EC401059)

■ w/54.85m Tower

Jib length (m)	39.60				42.65				45.70				48.75			
Tower angle Working radius (m)	90	80	70	60	90	80	70	60	90	80	70	60	90	80	70	60
14.0	21.0				19.2/14.8				16.6/15.6							
16.0	20.4				18.8				16.3				14.9/18.4			
18.0	19.9				18.3				16.0				14.5			
20.0	19.2				17.8				15.6				14.1			
22.0	18.6				17.3				15.2				13.7			
24.0	18.0				16.8				14.7				13.3			
26.0	17.4				16.2				14.3				12.8			
28.0	16.4	14.9/29.6			15.7				13.8				12.4			
30.0	14.8	14.8			14.6	13.9/31.1			13.4				12.0			
32.0	13.4	13.4			13.3	13.3			13.0	12.8/32.4			11.6	11.2/33.7		
34.0	12.3	12.3			12.2	12.2			12.2	12.2			11.2	11.2		
36.0	11.3	11.3			11.2	11.2			11.2	11.2			10.6	10.6		
38.0	10.4	10.4			10.3	10.3			10.3	10.3			9.8	9.8		
40.0	9.3	9.7			9.5	9.5			9.5	9.5			9.1	9.1		
42.0	8.7/40.2	9.0			8.8	8.8			8.6	8.8			8.5	8.5		
44.0		8.4	8.2/44.8		8.1/43.0	8.2			8.2	8.2			7.9	7.9		
46.0		7.9	7.9			7.7	7.6/46.5		7.1/45.9	7.7			7.4	7.4		
48.0		7.4	7.4			7.2	7.2			7.2	7.1/48.3		6.9	6.9		
50.0		6.9	6.9			6.7	6.7			6.7	6.7		6.4/48.7	6.5	6.5	
52.0		6.8/50.6	6.5			6.3	6.3			6.3	6.3			6.1	6.1	
54.0			6.2			6.0/53.6	5.9			5.9	5.9			5.8	5.8	
56.0			5.8				5.6			5.6	5.6			5.4	5.4	
58.0			5.5	5.5/58.4			5.3			5.5/56.5	5.2			5.1	5.1	
60.0			5.3/59.8	5.2			5.0	4.9/60.6			4.9			4.9/59.5	4.8	
62.0				5.0			4.7	4.7			4.7	4.6/62.8			4.6	
64.0				4.7			4.6/62.7	4.5			4.4	4.4			4.3	4.2/64.9
66.0				4.5				4.2			4.2/65.7	4.2			4.1	4.1
68.0				4.3				4.0				3.9			3.9	3.9
70.0				4.2/68.3				3.8				3.7			3.8/68.8	3.7
72.0								3.7/71.2				3.5				3.5
74.0												3.3				3.3
76.0												3.3/74.2				3.1
78.0																3.0/77.1

(EC401059)

■ w/57.90m Tower

Jib length (m)	27.45				30.50				33.50				36.55			
Tower angle Working radius (m)	90	80	70	60	90	80	70	60	90	80	70	60	90	80	70	60
10.0	25.0/10.8				25.0/11.6											
12.0	25.0				25.0				24.6/12.4				22.6/13.2			
14.0	25.0				25.0				24.0				22.3			
16.0	25.0				24.3				23.2				21.6			
18.0	24.7				23.4				22.4				20.9			
20.0	23.7				22.5				21.6				20.2			
22.0	22.7				21.6				20.8				19.5			
24.0	20.2	18.8/25.2			20.4				20.0				18.8			
26.0	17.9	17.9			18.1	17.6/26.5			18.3	16.6/27.8			18.1			
28.0	16.1	16.1			16.2	16.2			16.4	16.4			16.4	15.5/29.1		
30.0	14.4/28.7	14.7			14.7	14.7			14.8	14.8			14.8	14.8		
32.0		13.4			12.6/31.6	13.4			13.5	13.5			13.4	13.4		
34.0		12.3				12.3			12.4	12.4			12.3	12.3		
36.0		11.4				11.3			11.5/34.4	11.4			11.3	11.3		
38.0		10.6	10.3/38.9			10.5				10.6			10.2/37.3	10.4		
40.0		10.1/39.4	9.9			9.7	9.6/40.6			9.8				9.7		
42.0			9.3			9.1	9.1			9.2	9.1/42.3			9.0		
44.0			8.7			9.0/42.3	8.5			8.6	8.6			8.4	8.4/44.1	
46.0			8.2				8.0			8.2/45.3	8.0			7.9	7.9	
48.0			7.8				7.5				7.6			7.4	7.4	
50.0			7.6/49.0	7.1/51.4			7.1				7.1			7.3/48.2	6.9	
52.0				7.0			6.7	6.5/53.5				6.7			6.5	
54.0				6.7				6.4				6.4	6.1/55.7		6.2	
56.0				6.3				6.1			6.2/54.9	6.1		5.8	5.8	5.6/57.8
58.0				6.1				5.8				5.8		5.5/57.9	5.5	
60.0								5.5				5.5				5.2
62.0								5.4/61.0				5.2				5.0
64.0												5.0/63.9				4.7
66.0																4.5
68.0																4.4/66.9

(EC401059)

■ w/57.90m Tower

Jib length (m)	39.60				42.65				45.70				48.75			51.80		
Tower angle Working radius (m)	90	80	70	60	90	80	70	60	90	80	70	60	90	80	70	90	80	70
14.0	20.8				19.0/14.6				16.6/15.6									
16.0	20.2				18.6				16.5				14.9/16.4			13.6/17.1		
18.0	19.6				18.1				16.0				14.5			13.4		
20.0	19.0				17.6				15.6				14.1			13.0		
22.0	18.4				17.1				15.2				13.7			12.6		
24.0	17.8				16.6				14.7				13.3			12.2		
26.0	17.2				16.0				14.3				12.8			11.8		
28.0	16.3				15.5				13.8				12.4			11.4		
30.0	14.7	14.5/30.3			14.6	13.5/31.6			13.4				12.0			11.0		
32.0	13.4	13.4			13.3	13.3			13.0	12.6/32.9			11.6			10.6		
34.0	12.2	12.2			12.1	12.1			12.2	12.2			11.2	11.1/34.2		10.0	9.5/35.5	
36.0	11.3	11.3			11.1	11.1			11.1	11.1			10.5	10.5		9.3	9.3	
38.0	10.4	10.4			10.2	10.2			10.3	10.3			9.7	9.7		8.7	8.7	
40.0	9.4	9.6			9.5	9.5			9.5	9.5			9.0	9.0		8.1	8.1	
42.0	9.0/40.2	9.0			8.8	8.8			8.8	8.8			8.4	8.4		7.6	7.6	
44.0		8.4	7.9/45.8		8.2/43.0	8.2			8.2	8.2			7.9	7.9		7.1	7.1	
46.0		7.8	7.8			7.6	7.2/47.6		7.2/45.9	7.6			7.3	7.3		6.7	6.7	
48.0		7.3	7.3			7.1	7.1		7.1	6.8/49.3			6.9	6.9		6.3	6.3	
50.0		6.9	6.9			6.7	6.7		6.7	6.7			6.4/48.7	6.4	6.2/51.1	5.9	5.9	
52.0		6.7/51.2	6.5			6.3	6.3		6.3	6.3			6.1	6.1	5.6/51.6	5.6	5.4/52.8	
54.0			6.1			5.9	5.9		5.9	5.9			5.7	5.7		5.2	5.2	
56.0			5.8			5.9/54.1	5.5		5.5	5.5			5.4	5.4		5.0	5.0	
58.0			5.5				5.2		5.3/57.1	5.2			5.1	5.1		4.7	4.7	
60.0			5.2	5.2			4.9		4.9	4.9			4.8	4.8		4.4	4.4	
62.0			5.1/60.8	4.9			4.7	4.6/62.1		4.6				4.5		4.2	4.2	
64.0				4.7			4.4/63.8	4.4		4.4	4.3/64.3			4.3		4.1/62.9	4.0	
66.0				4.4				4.2		4.1	4.1			4.0			3.8	
68.0				4.2				3.9		4.0/66.7	3.9			3.8			3.6	
70.0				4.0/69.8				3.7					3.7		3.6/69.7		3.4	
72.0								3.5					3.5				3.2	
74.0								3.5/72.8					3.3				3.2/72.6	
76.0													3.1/75.7					

(EC401059)

■ w/60.95m Tower

Jib length (m)	27.45				30.50				33.50				36.55			
Tower angle	90	80	70	60	90	80	70	60	90	80	70	60	90	80	70	60
Working radius (m)																
10.0	25.0/10.8				24.1/11.6											
12.0	25.0				23.9				22.3/12.4				20.6/13.2			
14.0	24.2				23.0				21.7				20.3			
16.0	23.2				22.1				20.9				19.6			
18.0	22.2				21.2				20.1				18.9			
20.0	21.2				20.3				19.3				18.2			
22.0	20.2				19.4				18.5				17.5			
24.0	19.2	18.1/25.7			18.5				17.7				16.8			
26.0	17.9	17.9			17.6	16.9/27.0			16.9				16.1			
28.0	16.1	16.1			16.2	16.2			16.1	15.9/28.3			15.4	14.8/29.6		
30.0	14.4/28.7	14.6			14.6	14.6			14.8	14.8			14.7	14.7		
32.0		13.4			12.6/31.6	13.3			13.5	13.5			13.4	13.4		
34.0		12.3				12.2			12.3	12.3			12.2	12.2		
36.0		11.4				11.3			11.6/34.4	11.4			11.3	11.3		
38.0		10.6	9.9/39.9			10.4				10.5			10.2/37.3	10.4		
40.0		9.9/39.9	9.9			9.7	9.2/41.6			9.8				9.6		
42.0			9.2			9.1	9.1			9.1	8.7/43.4			9.0		
44.0			8.7			8.8/42.9	8.5			8.5	8.5			8.4	8.1/45.1	
46.0			8.2				8.0			8.0/45.8	8.0			7.8	7.8	
48.0			7.7				7.5				7.5			7.3	7.3	
50.0			7.3				7.1				7.1			7.2/48.8	6.9	
52.0			7.3/50.1	6.8/52.9			6.7				6.7				6.5	
54.0				6.6			6.5/53.0	6.2/55.0			6.3				6.1	
56.0				6.3				6.0			6.0	5.8/57.2			5.8	
58.0				6.0				5.7				5.7			5.5	5.3/59.3
60.0				5.8/59.6				5.4				5.4			5.4/58.9	5.2
62.0								5.2				5.2				4.9
64.0								5.1/62.5					4.9			4.7
66.0												4.8/65.4				4.4
68.0																4.2
70.0																4.2/68.4

(EC401059)

■ w/60.95m Tower

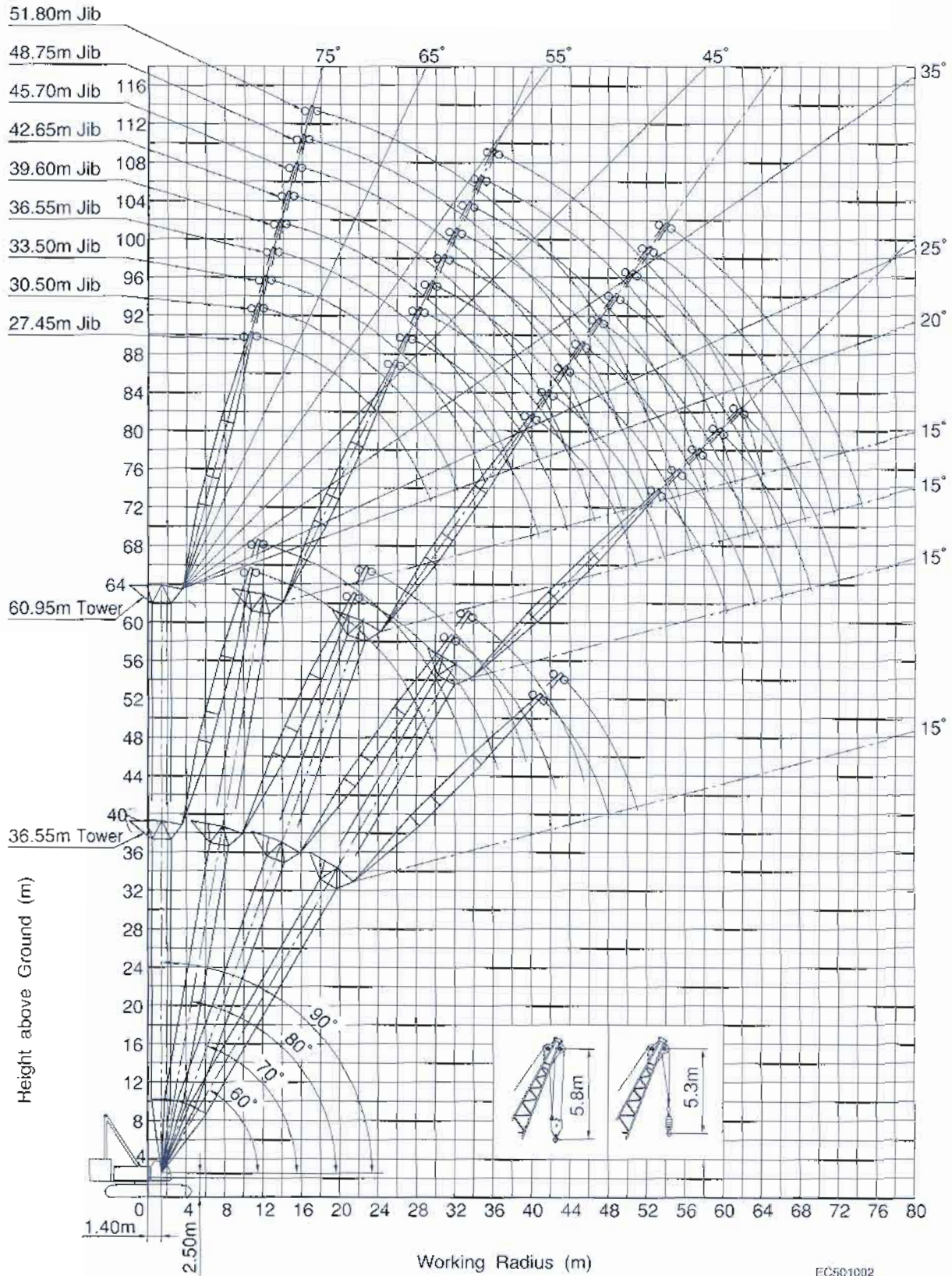
Jib length (m)	39.60				42.65			45.70			48.75			51.80		
Tower angle	90	80	70	60	90	80	70	90	80	70	90	80	70	90	80	70
Working radius (m)																
14.0	19.0				17.5/14.8			18.1/15.6								
16.0	18.4				17.1			16.0			14.9/16.4			13.6/17.1		
18.0	17.8				16.6			15.5			14.5			13.4		
20.0	17.2				16.1			15.1			14.1			13.0		
22.0	16.6				15.6			14.7			13.7			12.6		
24.0	16.0				15.1			14.2			13.3			12.2		
26.0	15.4				14.5			13.8			12.8			11.8		
28.0	14.8				14.0			13.3			12.4			11.4		
30.0	14.2	13.8/30.9			13.5			12.9			12.0			11.0		
32.0	13.3	13.3			13.0	12.9/32.2		12.5	12.1/33.5		11.6			10.6		
34.0	12.2	12.2			12.1	12.1		12.0	12.0		11.2	10.9/34.7		10.0		
36.0	11.2	11.2			11.1	11.1		11.1	11.1		10.5	10.5		9.3	9.3	
38.0	10.3	10.3			10.2	10.2		10.2	10.2		9.7	9.7		8.6	8.6	
40.0	9.4	9.6			9.4	9.4		9.4	9.4		9.0	9.0		8.1	8.1	
42.0	9.0/40.2	8.9			8.7	8.7		8.7	8.7		8.4	8.4		7.5	7.5	
44.0		8.3			8.2/43.0	8.1		8.1	8.1		7.8	7.8		7.1	7.1	
46.0		7.8	7.6/46.9			7.6		7.3/46.9	7.6		7.3	7.3		6.6	6.6	
48.0		7.3	7.3			7.1	6.9/49.8		7.1		6.8	6.8		6.2	6.2	
50.0		6.8	6.8			6.8	6.6	6.5/50.4	6.6	6.5/50.4	6.4	6.4		5.9	5.9	
52.0		6.5/51.7	6.4			6.2	6.2	6.2	6.2	6.2	6.0	6.0/52.1	5.8/51.6	5.5	5.2/53.8	
54.0			6.1			5.8	5.8	5.8	5.8	5.8	5.7	5.7		5.2	5.2	
56.0			5.7			5.7/54.8	5.5		5.5	5.5	5.3	5.3		4.9	4.9	
58.0			5.4				5.2		5.2/57.6	5.1	5.0	5.0		4.6	4.6	
60.0			5.1	4.9/61.5			4.9				4.8		4.7	4.7	4.4	4.4
62.0			4.9/61.9	4.9			4.8				4.6	4.7/60.5	4.5		4.1	4.1
64.0				4.6			4.4				4.3		4.2		4.0/63.5	3.9
66.0				4.4			4.3/64.3				4.1		4.0			3.7
68.0				4.2						3.9/67.8			3.8			3.5
70.0				3.9									3.6			3.3
72.0					3.5/71.3								3.5/70.7			3.2
74.0																3.0/73.6

(EC401059)

Notes — Luffing towercrane capacities

1. Capacities included in these charts are the maximum allowable, and are based on machine standing level on firm supporting surface under ideal job conditions.
2. Capacities are in metric tons, and are not more than based on 78% of minimum tipping loads except the figures surrounded by bold lines which are based on the other factor of machine structural strength limitation.
3. Capacities are based on freely suspended loads and make no allowance for such factors as the effect of wind, sudden stopping of loads, supporting surface conditions, and operating speeds. Operator must reduce load ratings to take such conditions into account. Deduction from rated capacities must be made for weight of hook block, weighted ball/hook, sling, spreader bar, or other suspended gear. Hook block weight is as follows:
35/25t - - -0.9ton 13.5t - - - 0.6ton
4. An 86.3ton counterweight, 1.7ton aux.weight and 14.0ton carbody weight are required.
5. All capacities are rated for 360° swing.
6. Least stable rated condition is over the side.
7. Attachment must be erected and lowered over the front of the crawler mounting.
8. Working radii shown above are at loading condition.
9. The machine can be steplessly operated at tower angle between 60 and 90 degrees safely; towercrane capacities available under any tower angle are automatically set up by a computerized automatic over-load preventing system, Model SML-10.
10. The machine must be operated in accordance with correct tower boom and jib combination shown right.
11. Capacities under single part hoist line are detailed; if required, please consult us, or nearest distributor

Luffing Towercrane Working Ranges



EC501002

Tower Boom and Jib Combination Table

■ Combination Table

Jib length (m)	27.45	30.50	33.55	36.60	39.60	42.65	45.70	48.75	51.80
36.55	○	○	×	×	×	×	×	×	×
39.60	○	○	○	×	×	×	×	×	×
42.65	○	○	○	○	×	×	×	×	×
45.70	○	○	○	○	○	×	×	×	×
48.75	○	○	○	○	○	○	×	×	×
51.80	○	○	○	○	○	○	○	×	×
54.85	○	○	○	○	○	○	○	○	×
57.90	○	○	○	○	○	○	○	○	○
60.95	○	○	○	○	○	○	○	○	○

Notes:

The meaning of symbols shown in the above table is as follows,

1. Symbol of "○": Possible to luff tower between 90° thru 60°;
2. Symbol of "◐": Possible to luff tower between 90° thru 70°;
3. Symbol of "×": Impossible to make any of tower boom and jib combination

■ Tower Boom Configuration

Boom length (m)	Tower boom combination
36.55	
39.60	
42.65	
45.70	
48.75	
51.80	
54.85	
57.90	
60.95	

Note:

The meaning of figures and symbols shown above is as follows:

- : 7.60m heavy-duty tower bottom section
- : 1.50m tower head section
- : 9.15m heavy-duty boom extension
- : 6.10m heavy-duty boom extension
- : 3.05m heavy-duty boom extension
- : 9.15m special heavy-duty boom extension
- : 6.10m special heavy-duty boom extension

■ Tower Jib Boom Configuration

Boom length (m)	Tower jib boom combination
27.45	
30.50	
33.50	
36.55	
39.60	
42.65	
45.70	
48.75	
51.80	

Note:

The meaning of figures and symbols shown above is as follows.

- : 9.15m light-duty tower jib bottom section
- : 9.15m light-duty tower jib top section
- : 9.15m light-duty boom extension
- : 6.10m light-duty boom extension
- : 3.05m light-duty boom extension

Liftcrane Capacities 250 metric tons

■ w/7.60m Tapered Crane Heavy Top Section

Boom length (m) Working radius (m)	15.25	18.30	21.35	24.40	27.45	30.50	33.50	36.55	39.60	42.65	45.70	48.75	51.80	54.85	57.90	60.95	64.00	67.05	70.10	73.15	
4.6	250.0																				
5.0	230.7	220.4/5.2	198.4/5.7																		
6.0	189.4	189.2	189.0	180.0/6.2	167.2/6.8																
7.0	163.6	163.4	163.2	162.9	162.6	145.0/7.3	139.0/7.8														
8.0	143.8	143.6	143.5	143.2	142.9	143.2	138.2	125.0/8.3	115.1/8.9												
9.0	128.2	128.0	127.9	127.6	127.3	127.6	127.3	123.8	114.8	105.2/9.4											
10.0	115.6	115.4	115.3	115.0	114.7	115.0	114.7	114.5	112.0	103.8	95.0/9.9	87.4/10.5	80.2/11.0	73.7/11.5							
12.0	89.6	89.5	89.3	89.2	89.0	89.5	89.3	89.4	89.2	88.9	89.9	84.8	78.7	73.0	67.9	62.1/12.6	53.7/13.1	52.9/13.6			
14.0	71.3	72.0	71.8	71.7	71.4	71.9	71.7	71.7	71.5	71.2	71.1	71.1	71.6	70.5	65.6	60.7	56.5	52.5	48.3/14.2	44.2/14.7	
16.0	63.0/14.8	60.1	59.8	59.6	59.3	59.8	59.5	59.6	59.4	59.1	58.9	58.9	58.6	58.4	59.0	58.8	54.8	51.0	47.0	43.0	
18.0		53.3/17.5	51.0	50.8	50.5	51.0	50.7	50.7	50.5	50.2	50.1	50.0	49.7	49.5	49.5	49.2	49.7	49.4	43.9	39.6	
20.0			44.4	44.2	43.8	44.3	44.0	44.0	43.8	43.4	43.3	43.2	42.9	42.7	42.7	42.4	42.3	42.2	40.6	36.6	
22.0			44.1/20.1	38.9	38.6	39.0	38.7	38.7	38.5	38.1	38.0	37.9	37.6	37.4	37.3	37.0	37.0	36.8	36.5	33.9	
24.0				37.3/22.7	34.4	34.7	34.4	34.4	34.2	33.8	33.7	33.6	33.2	33.1	33.0	32.7	32.6	32.4	32.1	31.6	
26.0					31.9/25.4	31.3	30.9	30.9	30.6	30.3	30.1	30.0	29.7	29.5	29.4	29.1	29.1	28.9	28.5	28.5	
28.0						28.3	28.0	27.9	27.7	27.3	27.2	27.1	26.7	26.5	26.5	26.1	26.1	25.9	25.5	25.5	
30.0							25.5	25.4	25.2	24.8	24.6	24.5	24.2	24.0	23.9	23.6	23.5	23.3	23.0	23.0	
32.0							24.7/30.7	23.3	23.0	22.6	22.5	22.4	22.0	21.8	21.7	21.4	21.3	21.1	20.8	20.8	
34.0								22.0/33.3	21.2	20.8	20.6	20.5	20.1	19.9	19.8	19.5	19.4	19.2	18.9	18.8	
36.0									19.6/35.9	19.1	18.9	18.8	18.4	18.3	18.2	17.8	17.7	17.5	17.2	17.2	
38.0										17.7	17.5	17.4	17.0	16.8	16.7	16.3	16.3	16.0	15.7	15.7	
40.0										17.3/38.6	16.2	16.1	15.7	15.5	15.4	15.0	14.9	14.7	14.4	14.3	
42.0											15.5/41.2	14.9	14.5	14.3	14.2	13.8	13.8	13.5	13.2	13.1	
44.0												13.9/43.9	13.5	13.3	13.2	12.8	12.7	12.5	12.1	12.1	
46.0													12.5	12.3	12.2	11.8	11.7	11.5	11.2	11.1	
48.0													12.3/46.5	11.5	11.3	11.0	10.9	10.6	10.3	10.2	
50.0														11.1/49.1	10.6	10.2	10.1	9.8	9.5	9.4	
52.0															9.9/51.8	9.5	9.3	9.1	8.7	8.7	
54.0																8.8	8.7	8.4	8.0	7.9	
56.0																	8.7/54.4	8.1	7.8	7.3	7.2
58.0																		7.7/57.1	7.1	6.7	6.5
60.0																			6.6/59.7	6.1	5.9
62.0																				5.5	5.3
64.0																				5.4/62.3	4.6
65.0																					4.6

(EC403023)

■ w/9.15m Tapered Crane Light Top Section

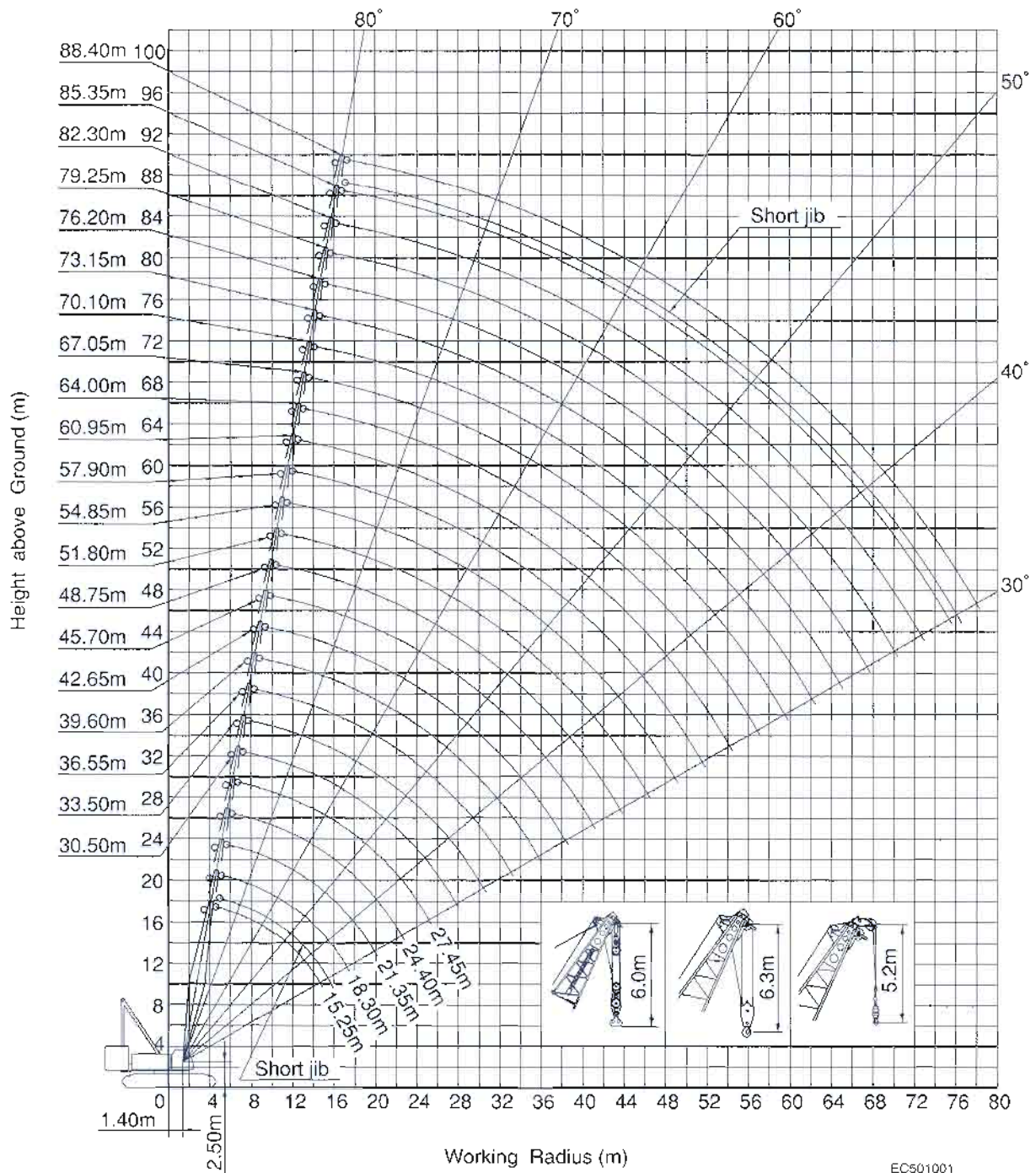
Boom length (m) Working radius (m)	73.15	76.20	79.25	82.30	85.35	88.40
14.0	37.5/14.5	34.5/15.0	32.7/15.5			
16.0	35.9	33.5	32.1	31.5/16.1	25.0/16.5	25.0/17.0
18.0	34.3	31.7	30.4	29.7	25.0	25.0
20.0	32.9	30.2	28.9	28.2	25.0	24.1
22.0	31.6	28.9	27.5	26.9	25.0	23.2
24.0	30.2	27.7	26.3	25.7	24.2	22.1
26.0	28.5	26.2	25.3	24.6	23.1	20.9
28.0	26.0	24.9	24.4	23.5	22.1	20.0
30.0	23.8	23.4	23.1	22.3	21.0	18.9
32.0	21.6	21.7	21.6	20.9	19.9	17.9
34.0	19.8	19.8	19.7	19.7	18.7	16.9
36.0	18.2	18.1	18.1	18.1	17.6	15.9
38.0	16.7	16.6	16.6	16.6	16.3	14.8
40.0	15.3	15.3	15.2	15.2	15.2	13.9
42.0	14.2	14.1	14.1	14.1	14.0	13.1
44.0	13.1	13.0	13.0	13.0	12.9	12.3
46.0	12.1	12.1	12.0	12.0	12.0	11.6
48.0	11.2	11.2	11.1	11.1	11.1	10.9
50.0	10.4	10.4	10.3	10.3	10.3	10.2
52.0	9.7	9.7	9.6	9.6	9.5	9.5
54.0	9.0	9.0	8.9	8.9	8.9	8.9
56.0	8.4	8.4	8.3	8.3	8.3	8.3
58.0	7.8	7.8	7.7	7.7	7.7	7.7
60.0	7.3	7.2	7.1	7.1	7.1	7.1
62.0	6.7	6.6	6.6	6.6	6.6	6.6
64.0	6.2	6.1	6.0	6.0	6.0	6.0
66.0	6.0/64.9	5.6	5.6	5.6	5.6	5.6
68.0		5.3/67.5	5.1	5.1	5.1	5.1
70.0			4.7	4.7	4.7	4.7
72.0			4.6/70.2	4.3	4.3	4.3
74.0				4.1/72.8	3.9	3.9
76.0					3.7/74.8	3.5
77.4						3.2

(EC403023)

Notes — Liftcrane capacities

- Capacities included in this chart are the maximum allowable, and are based on machine standing level on firm supporting surface under ideal job conditions.
- Capacities are in metric tons, and are not more than 78% of minimum tipping loads except the figures surrounded by bold lines which are based on other factor of machine structural strength limitation.
- Capacities are based on freely suspended loads and make no allowance for such factors as the effect of wind, sudden stopping of loads, supporting surface conditions, and operating speeds. Operator must reduce load ratings to take such conditions into account. Deduction from rated capacities must be made for weight of hook block, weighted ball/hook, sling, spreader bar, or other suspended gear. Hook block weight is as follows:
250t.....3.3ton 200t.....3.0ton 145t.....2.5ton
80t.....1.4ton 35/25t.....0.9ton 13.5t.....0.6ton
- All capacities are rated for 360° swing.
- Least stable rated condition is over the side.
- An 86.3ton counterweight, 1.7ton auxiliary weight, and 14.0ton carbody weight are required for all capacities on this chart.
- Attachment must be erected and lowered over the ends of the crawler mounting
- Main boom length must not exceed 88.40m. Maximum boom length when mounting auxiliary short jib is 85.35m
- Capacities when handling load off main boom head sheaves in case of mounting auxiliary short jib on top of boom are detailed, if required, please consult us or nearest distributor.
- Boom combination shall be in accordance with manufacturer's standard described here in "Boom Combination Diagram".

Liftcrane Working Ranges



Boom Combination Diagram for Liftcrane

Boom length (m)	Boom combination
15.25	
18.30	
21.35	
24.40	
27.45	
30.50	
33.50	
36.55	
39.60	
42.65	
45.70	
48.75	
51.80	
54.85	
57.90	
60.95	
64.00	
67.05	
70.10	
73.15	
76.20	
79.25	
82.30	
85.35	
88.40	

Note: Whenever fly jib is attached on main boom ranging all the way from 45.70m thru 73.15m, HEAVY-DUTY TAPERED TOP SECTION of 7.60m is required. And, in the case that main boom length of 73.15m as available as the longest is required, a 57.95m long heavy-duty boom extension in total is correspondingly necessary, and its configuration shall be 2 pcs. of 3.05m(3H), 1 pc. of 6.10m(6SH), 1 pc. of 9.15m(9SH) and 4 pcs. of 9.15m(9H) described below in column of 73.15m boom length.

Note:

The meaning of figures and symbols shown above are as follows:

- | | |
|--|---|
| : 7.60m heavy-duty bottom section | : 4.55m tapered boom extension |
| : 7.60m heavy-duty tapered top section | : 9.15m special heavy-duty boom extension |
| : 9.15m light-duty tapered top section | : 6.10m special heavy-duty boom extension |
| : 9.15m heavy-duty boom extension | : 9.15m light-duty boom extension |
| : 6.10m heavy-duty boom extension | : 6.10m light-duty boom extension |
| : 3.05m heavy-duty boom extension | : 3.05m light-duty boom extension |

MEMO



Specifications subject to change without notice

(1300 65 8888)

Website: www.btequipment.com.au

		Phone	Fax
BRISBANE	10-14 Ashover Road, Rocklea. Qld 4106	(07) 3373 6400	(07) 3875 1680
SYDNEY	6 Ferngrove Place, South Granville. NSW 2142	(02) 9780 7200	(02) 9780 7290
MELBOURNE	80-86 Frankston-Dandenong Road, Dandenong. Vic 3175	(03) 9554 0300	(03) 9554 0398
ADELAIDE	908 Main North Road, Mawson Lakes. SA 5095	(08) 8262 8292	(08) 8262 8320
PERTH	50 Great Eastern Highway, South Guildford. WA 6055	(08) 9478 0600	(08) 9478 0688

Address Inquires to: