



SCX2500

SUPPLEMENTARY

FLY JIB CAPACITIES

These fly jib capacities are under the conditions of boom length from 45.70m through 73.15m.

LIFTCRANE CAPACITIES with fly jib on top of main boom

These capacity charts show the figures when handling load off main boom head sheaves in a case of mounting fly jib on top of main boom.

Fly Jib Capacities

■ w/45.70m Boom

Fly jib length (m)	12.20				18.30			24.40		30.50		36.55	
	10		30		10		30	10	30	10	30	10	30
Fly jib offset angle (°)													
No. of part line	2-part	1-part	2-part	1-part	2-part	1-part	1-part	1-part	1-part	1-part	1-part	1-part	1-part
Working radius (m)													
14.0	25.0/14.2	13.5/14.5											
16.0	25.0	13.5											
18.0	25.0	13.5	14.7	13.5	19.1	13.5		12.9/19.2					
20.0	25.0	13.5	14.4	13.5	18.6	13.5	10.6/21.6	12.8		7.0/20.8		4.9/21.9	
22.0	24.1	13.5	14.1	13.5	18.0	13.5	10.5	12.5		6.9		4.8	
24.0	23.1	13.5	13.8	13.5	17.5	13.5	10.3	12.3	8.6/25.1	6.8		4.8	
26.0	22.1	13.5	13.5	13.5	16.9	13.5	10.1	12.1	8.5	6.6		4.7	
28.0	21.2	13.5	13.2	13.2	16.4	13.5	9.8	11.9	8.3	6.5	5.4/28.2	4.6	
30.0	20.2	13.5	12.9	12.9	15.9	13.5	9.6	11.7	8.2	6.4	5.3	4.5	3.1/30.8
32.0	19.3	13.5	12.6	12.6	15.3	13.5	9.4	11.4	8.0	6.3	5.2	4.5	3.0
34.0	18.3	13.5	12.3	12.3	14.8	13.5	9.2	11.2	7.8	6.2	5.2	4.4	3.0
36.0	17.3	13.5	12.0	12.0	14.2	13.5	9.0	11.0	7.7	6.0	5.1	4.3	3.0
38.0	16.4	13.5	11.7	11.7	13.7	13.5	8.7	10.8	7.5	5.9	5.0	4.2	3.0
40.0	15.4	13.5	11.4	11.4	13.1	13.1	8.5	10.6	7.3	5.8	5.0	4.1	3.0
42.0	14.4	13.5	11.1	11.1	12.6	12.6	8.3	10.4	7.2	5.7	4.9	4.1	2.9
44.0	13.5	13.5	10.8	10.8	12.1	12.1	8.1	10.1	7.0	5.5	4.8	4.0	2.9
46.0	12.5	12.5	10.5	10.5	11.5	11.5	7.9	9.9	6.9	5.4	4.8	3.9	2.9
48.0	11.6	11.6	10.2	10.2	11.0	11.0	7.6	9.7	6.7	5.3	4.7	3.8	2.9
50.0	10.6	10.6	9.9	9.9	10.4	10.4	7.4	9.5	6.5	5.2	4.7	3.8	2.8
52.0	9.6	9.6	9.6	9.6	9.9	9.9	7.2	9.3	6.4	5.1	4.6	3.7	2.8
54.0	9.6/52.4	9.6/53.2	9.5/52.9	9.5/53.7	9.4	9.4	7.0	9.0	6.2	4.9	4.5	3.6	2.8
56.0					8.8	8.8	6.8	8.8	6.1	4.8	4.5	3.5	2.8
58.0					8.3	8.3	6.5	8.6	5.9	4.7	4.4	3.4	2.8
60.0					8.3/58.3	8.3/59.1	6.4/59.8	8.4	5.7	4.6	4.3	3.4	2.7
62.0								8.1	5.6	4.5	4.3	3.3	2.7
64.0								7.6	5.4	4.3	4.2	3.2	2.7
66.0								7.4/64.8	5.3/65.0	4.2	4.1	3.1	2.7
68.0										4.1	4.1	3.1	2.7
70.0										4.0	4.0	3.0	2.6
72.0										4.0/70.4	4.0	2.9	2.6
74.0												2.8	2.6
76.0												2.8/75.7	2.6
78.0													2.6

(EC401057)

■ w/48.75m Boom

Fly jib length (m)	12.20				18.30			24.40		30.50		36.55	
	10		30		10		30	10	30	10	30	10	30
Fly jib offset angle (°)													
No. of part line	2-part	1-part	2-part	1-part	2-part	1-part	1-part	1-part	1-part	1-part	1-part	1-part	1-part
Working radius (m)													
14.0	25.0/14.8	13.5/15.0											
16.0	25.0	13.5											
18.0	25.0	13.5	14.8	13.5/18.2	19.2	13.5		12.9/19.7					
20.0	25.0	13.5	14.5	13.5	18.7	13.5		12.8		7.0/21.3		4.9/22.4	
22.0	24.5	13.5	14.2	13.5	18.2	13.5	10.6/22.1	12.6		6.9		4.8	
24.0	23.6	13.5	13.9	13.5	17.7	13.5	10.4	12.4	8.6/25.6	6.8		4.7	
26.0	22.7	13.5	13.6	13.5	17.2	13.5	10.2	12.2	8.5	6.7		4.6	
28.0	21.8	13.5	13.4	13.4	16.7	13.5	9.9	12.0	8.4	6.6	5.4/28.7	4.6	
30.0	20.9	13.5	13.1	13.1	16.2	13.5	9.7	11.8	8.2	6.4	5.3	4.6	3.1/31.3
32.0	19.9	13.5	12.8	12.8	15.6	13.5	9.5	11.6	8.1	6.3	5.2	4.5	3.0
34.0	19.0	13.5	12.5	12.5	15.1	13.5	9.3	11.4	7.9	6.2	5.2	4.4	3.0
36.0	18.1	13.5	12.2	12.2	14.6	13.5	9.1	11.2	7.8	6.1	5.1	4.3	3.0
38.0	16.8	13.5	11.9	11.9	14.1	13.5	8.9	10.9	7.6	6.0	5.1	4.3	3.0
40.0	15.5	13.5	11.6	11.6	13.6	13.5	8.7	10.7	7.5	5.9	5.0	4.2	3.0
42.0	14.3	13.5	11.4	11.4	13.1	13.1	8.5	10.5	7.3	5.7	4.9	4.1	2.9
44.0	13.3	13.3	11.1	11.1	12.6	12.6	8.3	10.3	7.1	5.6	4.9	4.0	2.9
46.0	12.3	12.3	10.8	10.8	12.1	12.1	8.1	10.1	7.0	5.5	4.8	4.0	2.9
48.0	11.5	11.5	10.5	10.5	11.5	11.5	7.9	9.9	6.8	5.4	4.8	3.9	2.9
50.0	10.7	10.7	10.2	10.2	11.0	11.0	7.7	9.7	6.7	5.3	4.7	3.8	2.9
52.0	9.9	9.9	9.9	9.9	10.3	10.3	7.4	9.5	6.5	5.2	4.6	3.7	2.8
54.0	9.3	9.3	9.3	9.3	9.7	9.7	7.2	9.3	6.4	5.1	4.6	3.7	2.8
56.0	9.0/55.1	8.9/55.8	8.9/55.6	8.9	9.0	9.0	7.0	9.1	6.2	4.9	4.5	3.5	2.8
58.0				8.8/56.4	8.4	8.4	6.8	8.8	6.1	4.8	4.5	3.5	2.8
60.0					7.9	7.9	6.6	8.4	5.9	4.7	4.4	3.4	2.8
62.0					7.7/61.0	7.7/61.7	6.4	7.9	5.8	4.6	4.3	3.4	2.7
64.0							6.4/62.5	7.4	5.6	4.5	4.3	3.3	2.7
66.0								6.9	5.5	4.4	4.2	3.2	2.7
68.0								6.6/67.5	5.3	4.2	4.2	3.1	2.7
70.0									5.3/68.6	4.1	4.1	3.1	2.7
72.0										4.0	4.0	3.0	2.6
74.0										4.0/73.0	4.0	2.9	2.6
76.0												2.8	2.6
78.0												2.8	2.6
80.0												2.8/78.4	2.6
82.0													2.6/80.6

(EC401057)

■ w/51.80m Boom

Fly jib length (m)	12.20				18.30				24.40		30.50		36.55	
	10		30		10		30		10	30	10	30	10	30
Fly jib offset angle (°)														
No. of part line	2-part	1-part	2-part	1-part	2-part	1-part	1-part	1-part	1-part	1-part	1-part	1-part	1-part	1-part
Working radius (m)														
14.0	25.0/15.3	13.5/15.6												
16.0	25.0	13.5			19.5/17.9									
18.0	25.0	13.5	14.9/13.2	13.5/18.7	19.4	13.5/18.2								
20.0	25.0	13.5	14.6	13.5	18.9	13.5			12.9/20.2					
22.0	24.9	13.5	14.3	13.5	18.4	13.5	10.6/22.7	12.7			7.0/21.8			
24.0	24.0	13.5	14.0	13.5	17.9	13.5	10.4	12.5			6.9		4.0/22.9	
26.0	23.1	13.5	13.8	13.5	17.4	13.5	10.2	12.3	8.6/26.2		6.8		4.8	
28.0	22.3	13.5	13.5	13.5	16.9	13.5	10.0	12.1	8.4	6.6	5.4/29.2		4.7	
30.0	21.4	13.5	13.2	13.2	16.4	13.5	9.8	11.9	8.3	6.5	5.3	4.0		3.1/31.8
32.0	20.6	13.5	13.0	13.0	15.9	13.5	9.6	11.7	8.1	6.4	5.3	4.5	3.0	
34.0	19.6	13.5	12.7	12.7	15.5	13.5	9.4	11.5	8.0	6.3	5.2	4.5	3.0	
36.0	18.0	13.5	12.4	12.4	15.0	13.5	9.2	11.3	7.8	6.2	5.2	4.4	3.0	
38.0	16.5	13.5	12.2	12.2	14.5	13.5	9.0	11.1	7.7	6.1	5.1	4.3	3.0	
40.0	15.2	13.5	11.9	11.9	14.0	13.5	8.8	10.9	7.5	5.9	5.0	4.2	3.0	
42.0	14.0	13.5	11.6	11.6	13.5	13.5	8.6	10.7	7.4	5.8	5.0	4.2	3.0	
44.0	13.0	13.0	11.3	11.3	13.0	13.0	8.4	10.5	7.2	5.7	4.9	4.1	2.9	
46.0	12.0	12.0	11.1	11.1	12.5	12.5	8.2	10.3	7.1	5.6	4.9	4.0	2.9	
48.0	11.2	11.2	10.8	10.8	11.6	11.6	8.0	10.1	7.0	5.5	4.8	3.9	2.9	
50.0	10.4	10.4	10.5	10.5	10.8	10.8	7.8	9.9	6.8	5.4	4.7	3.9	2.9	
52.0	9.6	9.6	9.8	9.8	10.0	10.0	7.6	9.7	6.7	5.3	4.7	3.8	2.9	
54.0	9.0	9.0	9.1	9.1	9.4	9.4	7.4	9.5	6.5	5.2	4.6	3.7	2.8	
56.0	8.3	8.3	8.4	8.4	8.7	8.7	7.3	9.3	6.4	5.0	4.6	3.7	2.8	
58.0	7.9/57.7	7.9	7.8	7.8	8.1	8.1	7.1	8.7	6.2	4.9	4.5	3.6	2.8	
60.0		7.8/58.5	7.7/58.2	7.7/59.0	7.6	7.6	6.9	8.1	6.1	4.8	4.5	3.5	2.8	
62.0					7.1	7.1	6.7	7.6	5.9	4.7	4.4	3.4	2.8	
64.0					6.7/63.6	6.7	6.5	7.1	5.8	4.6	4.3	3.4	2.7	
66.0						6.7/64.4	6.4/65.1	6.6	5.6	4.5	4.3	3.3	2.7	
68.0								6.2	5.5	4.4	4.2	3.2	2.7	
70.0								5.7	5.1	4.3	4.2	3.1	2.7	
72.0								5.7/70.1	5.3/71.2	4.2	4.1	3.1	2.7	
74.0										4.0	4.0	3.0	2.6	
76.0										4.0/75.7	4.0	2.9	2.6	
78.0											4.0/77.3	2.9	2.6	
80.0												2.8	2.6	
82.0												2.8/81.0	2.6	
84.0													2.6/83.3	

(EC401057)

■ w/54.85m Boom

Fly jib length (m)	12.20				18.30				24.40		30.50		36.55	
	10		30		10		30		10	30	10	30	10	30
Fly jib offset angle (°)														
No. of part line	2-part	1-part	2-part	1-part	2-part	1-part	1-part	1-part	1-part	1-part	1-part	1-part	1-part	1-part
Working radius (m)														
14.0	25.0/15.8													
16.0	25.0	13.5/16.1												
18.0	25.0	13.5	14.9/18.8	13.5/19.2	19.5/18.4	13.5/18.7								
20.0	25.0	13.5	14.7	13.5	19.1	13.5			12.9/20.8					
22.0	25.0	13.5	14.4	13.5	18.6	13.5	10.6/23.2	12.7			7.0/22.4		4.9/23.4	
24.0	24.4	13.5	14.2	13.5	18.1	13.5	10.5	12.5			6.9		4.8	
26.0	23.6	13.5	13.9	13.5	17.6	13.5	10.3	12.3	8.6/26.7		6.8		4.8	
28.0	22.8	13.5	13.6	13.5	17.2	13.5	10.1	12.2	8.5	6.6	5.4/29.8		4.7	
30.0	22.0	13.5	13.4	13.4	16.7	13.5	9.9	12.0	8.3	6.5	5.3	4.6		
32.0	21.1	13.5	13.1	13.1	16.2	13.5	9.7	11.8	8.2	6.4	5.3	4.6	3.1/32.4	
34.0	19.4	13.5	12.9	12.9	15.8	13.5	9.5	11.6	8.0	6.3	5.2	4.5	3.0	
36.0	17.8	13.5	12.6	12.6	15.3	13.5	9.3	11.4	7.9	6.2	5.2	4.4	3.0	
38.0	16.3	13.5	12.4	12.4	14.8	13.5	9.2	11.2	7.8	6.1	5.1	4.3	3.0	
40.0	15.0	13.5	12.1	12.1	14.4	13.5	9.0	11.0	7.6	6.0	5.1	4.3	3.0	
42.0	13.8	13.5	11.8	11.8	13.9	13.5	8.8	10.8	7.5	5.9	5.0	4.2	3.0	
44.0	12.8	12.8	11.6	11.6	13.2	13.2	8.6	10.6	7.3	5.8	5.0	4.1	2.9	
46.0	11.8	11.8	11.3	11.3	12.3	12.3	8.4	10.4	7.2	5.7	4.9	4.1	2.9	
48.0	10.9	10.9	11.1	11.1	11.4	11.4	8.2	10.2	7.1	5.6	4.8	4.0	2.9	
50.0	10.2	10.2	10.3	10.3	10.6	10.6	8.0	10.0	6.9	5.5	4.8	3.9	2.9	
52.0	9.4	9.4	9.6	9.6	9.8	9.8	7.8	9.8	6.8	5.4	4.7	3.9	2.9	
54.0	8.7	8.7	8.9	8.9	9.1	9.1	7.6	9.7	6.6	5.3	4.7	3.8	2.8	
56.0	8.1	8.1	8.2	8.2	8.5	8.5	7.5	9.1	6.5	5.1	4.6	3.7	2.8	
58.0	7.5	7.5	7.6	7.6	7.9	7.9	7.3	8.5	6.4	5.0	4.6	3.6	2.8	
60.0	7.0	7.0	7.0	7.0	7.4	7.4	7.1	7.9	6.2	4.9	4.5	3.6	2.8	
62.0	6.9/60.4	6.9/61.1	6.8/60.8	6.8/61.6	6.9	6.9	6.9	7.4	6.1	4.8	4.5	3.5	2.8	
64.0					6.3	6.3	6.7	6.9	5.9	4.7	4.4	3.4	2.8	
66.0					5.8	5.8	6.2	6.4	5.8	4.6	4.3	3.4	2.7	
68.0					5.8/66.3	5.8/67.0	5.7/67.7	5.9	5.7	4.5	4.3	3.3	2.7	
70.0								5.5	5.5	4.4	4.2	3.2	2.7	
72.0								5.0	5.2	4.3	4.2	3.2	2.7	
74.0								4.9/72.7	4.7/73.8	4.2	4.1	3.1	2.7	
76.0										4.1	4.1	3.0	2.6	
78.0										4.0	4.0	2.9	2.6	
80.0										4.0/78.3	3.9/79.9	2.9	2.6	
82.0												2.8	2.6	
84.0												2.8/83.7	2.6	
86.0													2.6/85.9	

(EC401057)

w/57.90m Boom

Fly jib length (m)	12.20				18.30				24.40				30.50				36.55		
	10		30		10		30		10		30		10		30		10	30	
	No. of part line Working radius (m)		No. of part line Working radius (m)		No. of part line Working radius (m)		No. of part line Working radius (m)		No. of part line Working radius (m)		No. of part line Working radius (m)		No. of part line Working radius (m)		No. of part line Working radius (m)		No. of part line Working radius (m)	No. of part line Working radius (m)	
16.0	25.0/16.3	13.5/16.6																	
18.0	25.0	13.5	14.9/19.3	13.5/19.6	19.5/18.9	13.5/19.2													
20.0	25.0	13.5	14.7	13.5	19.2	13.5				12.9/21.3									
22.0	25.0	13.5	14.5	13.5	18.7	13.5	10.6/23.7	12.8				7.0/22.9							
24.0	24.8	13.5	14.3	13.5	18.3	13.5	10.5	12.6				6.9				4.9			
26.0	24.0	13.5	14.0	13.5	17.8	13.5	10.3	12.4		8.6/27.2		6.8				4.8			
28.0	23.2	13.5	13.8	13.5	17.4	13.5	10.2	12.2		8.5		6.7				4.7			
30.0	22.4	13.5	13.5	13.5	16.9	13.5	10.0	12.0		8.4		6.6	5.4/30.3			4.6			
32.0	21.1	13.5	13.3	13.3	16.5	13.5	9.8	11.9		8.2		6.5	5.3			4.5	3.1/32.9		
34.0	19.2	13.5	13.0	13.0	16.0	13.5	9.6	11.7		8.1		6.4	5.3			4.5	3.0		
36.0	17.6	13.5	12.8	12.8	15.6	13.5	9.4	11.5		8.0		6.3	5.2			4.4	3.0		
38.0	16.1	13.5	12.5	12.5	15.1	13.5	9.3	11.3		7.8		6.2	5.1			4.4	3.0		
40.0	14.8	13.5	12.3	12.3	14.7	13.5	9.1	11.1		7.7		6.1	5.1			4.3	3.0		
42.0	13.6	13.5	12.1	12.1	14.1	13.5	8.9	10.9		7.6		6.0	5.0			4.2	3.0		
44.0	12.6	12.6	11.8	11.8	13.0	13.0	8.7	10.8		7.4		5.9	5.0			4.2	3.0		
46.0	11.6	11.6	11.6	11.6	12.0	12.0	8.5	10.6		7.3		5.8	4.9			4.1	2.9		
48.0	10.7	10.7	11.0	11.0	11.2	11.2	8.4	10.4		7.2		5.7	4.9			4.0	2.9		
50.0	9.9	9.9	10.2	10.2	10.4	10.4	8.2	10.2		7.0		5.6	4.8			4.0	2.9		
52.0	9.2	9.2	9.4	9.4	9.6	9.6	8.0	10.0		6.9		5.4	4.8			3.9	2.9		
54.0	8.5	8.5	8.7	8.7	8.9	8.9	7.8	9.5		6.8		5.3	4.7			3.8	2.9		
56.0	7.9	7.9	8.0	8.0	8.3	8.3	7.6	8.6		6.6		5.2	4.7			3.8	2.8		
58.0	7.3	7.3	7.4	7.4	7.7	7.7	7.5	8.2		6.5		5.1	4.6			3.7	2.8		
60.0	6.7	6.7	6.8	6.8	7.2	7.2	7.3	7.7		6.4		5.0	4.6			3.6	2.8		
62.0	6.1	6.1	6.2	6.2	6.6	6.6	7.1	7.2		6.2		4.9	4.5			3.6	2.8		
64.0	5.9/63.0	5.9/63.7	5.8/63.5	5.8	6.0	6.0	6.5	6.7		6.1		4.8	4.4			3.5	2.8		
66.0				5.8/64.3	5.5	5.5	5.9	6.1		6.0		4.7	4.4			3.4	2.8		
68.0					5.0	5.0	5.4	5.6		5.8		4.6	4.3			3.4	2.7		
70.0					4.9/68.9	4.9/69.6	4.9	5.2		5.5		4.5	4.3			3.3	2.7		
72.0							4.8/70.4	4.7		5.0		4.4	4.2			3.2	2.7		
74.0								4.3		4.5		4.3	4.2			3.2	2.7		
76.0								4.0/75.4		4.0		4.2	4.1			3.1	2.7		
78.0										3.9/76.5		3.8	4.1			3.0	2.6		
80.0												3.5	3.7			3.0	2.6		
82.0												3.3/80.9	3.3			2.9	2.6		
84.0													3.2/82.5			2.8	2.6		
86.0																2.7	2.6		
88.0																2.6/86.3	2.6		
90.0																	2.5/88.5	2.6	

(EC401057)

w/60.95m Boom

Fly jib length (m)	12.20				18.30				24.40				30.50				36.55		
	10		30		10		30		10		30		10		30		10	30	
	No. of part line Working radius (m)		No. of part line Working radius (m)		No. of part line Working radius (m)		No. of part line Working radius (m)		No. of part line Working radius (m)		No. of part line Working radius (m)		No. of part line Working radius (m)		No. of part line Working radius (m)		No. of part line Working radius (m)	No. of part line Working radius (m)	
16.0	25.0/16.9	13.5/17.1																	
18.0	25.0	13.5	14.9/19.8		19.5/19.5	13.5/19.7													
20.0	25.0	13.5	14.8	13.5/20.3	19.3	13.5				12.9/21.8									
22.0	25.0	13.5	14.5	13.5	18.8	13.5				12.8			7.0/23.4						
24.0	24.4	13.5	14.2	13.5	18.3	13.5	10.6/24.3	12.7				6.9				4.9/24.5			
26.0	23.4	13.5	13.9	13.5	17.8	13.5	10.4	12.5		8.6/27.8		6.8				4.8			
28.0	22.5	13.5	13.6	13.5	17.4	13.5	10.2	12.3		8.5		6.7				4.7			
30.0	21.5	13.5	13.3	13.3	16.9	13.5	10.1	12.1		8.4		6.6	5.4/30.6			4.7			
32.0	20.6	13.5	13.0	13.0	16.4	13.5	9.9	11.9		8.3		6.5	5.3			4.6	3.1/33.4		
34.0	18.9	13.5	12.7	12.7	15.9	13.5	9.7	11.8		8.2		6.4	5.3			4.5	3.0		
36.0	17.3	13.5	12.4	12.4	15.4	13.5	9.5	11.6		8.0		6.3	5.2			4.5	3.0		
38.0	15.8	13.5	12.1	12.1	15.0	13.5	9.4	11.4		7.9		6.2	5.2			4.4	3.0		
40.0	14.6	13.5	11.8	11.8	14.5	13.5	9.2	11.2		7.8		6.1	5.1			4.3	3.0		
42.0	13.3	13.3	11.5	11.5	13.8	13.5	9.0	11.1		7.6		6.0	5.1			4.3	3.0		
44.0	12.2	12.2	11.2	11.2	12.7	12.7	8.9	10.9		7.5		5.9	5.0			4.2	3.0		
46.0	11.3	11.3	10.9	10.9	11.7	11.7	8.7	10.7		7.4		5.8	5.0			4.2	2.9		
48.0	10.4	10.4	10.6	10.6	10.9	10.9	8.5	10.5		7.3		5.7	4.9			4.1	2.9		
50.0	9.6	9.6	9.9	9.9	10.0	10.0	8.3	10.3		7.1		5.6	4.9			4.0	2.9		
52.0	8.9	8.9	9.1	9.1	9.3	9.3	8.2	9.9		7.0		5.5	4.8			4.0	2.9		
54.0	8.2	8.2	8.4	8.4	8.6	8.6	8.0	9.2		6.9		5.4	4.8			3.9	2.9		
56.0	7.5	7.5	7.7	7.7	8.0	8.0	7.8	8.6		6.7		5.3	4.7			3.8	2.9		
58.0	6.9	6.9	7.1	7.1	7.4	7.4	7.6	8.0		6.6		5.2	4.7			3.8	2.8		
60.0	6.2	6.2	6.4	6.4	6.8	6.8	7.4	7.4		6.5		5.1	4.6			3.7	2.8		
62.0	5.7	5.7	5.8	5.8	6.2	6.2	6.8	6.9		6.4		5.0	4.5			3.6	2.8		
64.0	5.1	5.1	5.2	5.2	5.6	5.6	6.2	6.3		6.2		4.9	4.5			3.6	2.8		
66.0	4.8/65.6	4.8	4.7/66.1	4.7	5.1	5.1	5.6	5.6		6.1		4.8	4.4			3.5	2.8		
68.0		4.8/66.4		4.7/66.9	4.6	4.6	5.1	5.3		5.6		4.7	4.4			3.4	2.8		
70.0					4.1	4.1	4.6	4.8		5.1		4.6	4.3			3.4	2.7		
72.0					3.9/71.5	3.9	4.1	4.3		4.6		4.5	4.3			3.3	2.7		
74.0						3.9/72.3	3.8/73.0	3.9		4.2		4.2	4.2			3.2	2.7		
76.0								3.5		3.7		3.8	4.2			3.2	2.7		
78.0								3.1		3.3		3.4	3.8			3.1	2.7		
80.0										3.1/79.1		3.1	3.4			3.0	2.6		
82.0												2.7	3.0			2.9	2.6		
84.0												2.5/83.6	2.6			2.6	2.6		
86.0													2.4/85.2			2.6	2.6		
88.0																	2.3		

(EC401057)

■ w/64.00m Boom

Fly jib length (m)	12.20				18.30				24.40		30.50		36.55	
	10		30		10		30		10	30	10	30	10	30
Fly jib offset angle (°)														
No. of part line	2-part	1-part	2-part	1-part	2-part	1-part	1-part	1-part	1-part	1-part	1-part	1-part	1-part	1-part
Working radius (m)														
16.0	25.0/17.4	13.5/17.7												
18.0	25.0	13.5												
20.0	24.6	13.5	14.9/20.4	13.5/20.8	19.4	13.5/20.3								
22.0	23.8	13.5	14.6	13.5	18.8	13.5								
24.0	22.9	13.5	14.2	13.5	18.2	13.5	10.6/24.8	12.7			7.0		4.9/25.0	
26.0	22.0	13.5	13.9	13.5	17.6	13.5	10.5	12.5			6.9		4.8	
28.0	21.2	13.5	13.6	13.5	17.0	13.5	10.3	12.4	8.6/24.3		6.8		4.8	
30.0	20.3	13.5	13.3	13.3	16.4	13.5	10.1	12.2	8.4	6.7	5.4/31.4		4.7	
32.0	19.5	13.5	12.9	12.9	15.8	13.5	10.0	12.0	8.3	6.6	5.3		4.6	
34.0	18.6	13.5	12.6	12.6	15.2	13.5	9.8	11.9	8.2	6.5	5.3		4.6	3.1
36.0	17.1	13.5	12.3	12.3	14.5	13.5	9.6	11.7	8.1	6.4	5.2		4.5	3.0
38.0	15.6	13.5	11.9	11.9	13.9	13.5	9.5	11.5	8.0	6.3	5.2		4.4	3.0
40.0	14.9	13.5	11.6	11.6	13.3	13.3	9.3	11.3	7.8	6.2	5.1		4.4	3.0
42.0	13.1	13.1	11.3	11.3	12.7	12.7	9.1	11.2	7.7	6.1	5.1		4.3	3.0
44.0	12.0	12.0	11.0	11.0	12.1	12.1	9.0	11.0	7.6	6.0	5.0		4.3	3.0
46.0	11.1	11.1	10.6	10.6	11.5	11.5	8.8	10.8	7.5	5.9	5.0		4.2	2.9
48.0	10.2	10.2	10.3	10.3	10.7	10.7	8.6	10.7	7.3	5.8	4.9		4.1	2.9
50.0	9.4	9.4	9.7	9.7	9.8	9.8	8.5	10.5	7.2	5.7	4.9		4.1	2.9
52.0	8.7	8.7	8.9	8.9	9.1	9.1	8.3	9.7	7.1	5.6	4.8		4.0	2.9
54.0	8.0	8.0	8.2	8.2	8.4	8.4	8.1	9.0	7.0	5.5	4.8		3.9	2.9
56.0	7.3	7.3	7.5	7.5	7.8	7.8	8.0	8.4	6.8	5.4	4.7		3.9	2.9
58.0	6.6	6.6	6.8	6.8	7.1	7.1	7.8	7.8	6.7	5.3	4.7		3.8	2.8
60.0	6.0	6.0	6.2	6.2	6.5	6.5	7.2	7.2	6.6	5.2	4.6		3.7	2.8
62.0	5.4	5.4	5.5	5.5	5.9	5.9	6.5	6.6	6.5	5.1	4.6		3.7	2.8
64.0	4.8	4.8	5.0	5.0	5.3	5.3	5.9	6.0	6.3	5.0	4.5		3.6	2.8
66.0	4.3	4.3	4.4	4.4	4.8	4.8	5.4	5.5	6.0	4.9	4.5		3.6	2.8
68.0	3.8	3.8	3.9	3.9	4.3	4.3	4.8	5.0	5.4	4.8	4.4		3.5	2.8
70.0	3.3/66.3	3.3/69.0	3.3/68.8	3.3/69.6	3.3	3.3	4.3	4.5	4.9	4.7	4.4		3.4	2.7
72.0					3.4	3.4	3.9	4.1	4.4	4.3	4.3		3.4	2.7
74.0					3.1	3.1	3.4	3.7	4.0	3.9	4.3		3.3	2.7
76.0					3.1/74.2	3.1/74.9	3.0/75.7	3.3	3.5	3.5	4.0		3.2	2.7
78.0								2.9	3.1	3.2	3.6		3.2	2.7
80.0								2.5	2.7	2.8	3.2		3.0	2.7
82.0										2.5	2.8		2.6	2.6
84.0											2.4		2.4	2.6
86.0														2.4

(EC401057)

■ w/67.05m Boom

Fly jib length (m)	12.20				18.30				24.40		30.50		36.55	
	10		30		10		30		10	30	10	30	10	30
Fly jib offset angle (°)														
No. of part line	2-part	1-part	2-part	1-part	2-part	1-part	1-part	1-part	1-part	1-part	1-part	1-part	1-part	1-part
Working radius (m)														
16.0	25.0/17.9													
18.0	24.9	13.5/18.2												
20.0	24.0	13.5	14.9/20.9	13.5/21.4	19.5/20.5	13.5/20.8								
22.0	23.2	13.5	14.6	13.5	19.0	13.5		12.9/22.9						
24.0	22.4	13.5	14.2	13.5	18.3	13.5	10.6/25.3	12.8			7.0/24.5		4.9/25.6	
26.0	21.5	13.5	13.8	13.5	17.7	13.5	10.5	12.6			6.9		4.8	
28.0	20.7	13.5	13.4	13.4	17.1	13.5	10.3	12.4	8.6/28.8		6.8		4.8	
30.0	19.9	13.5	13.0	13.0	16.5	13.5	10.2	12.3	8.5	6.7	5.4/31.9		4.7	
32.0	19.0	13.5	12.6	12.6	15.9	13.5	10.0	12.1	8.4	6.6	5.3		4.7	
34.0	18.2	13.5	12.2	12.2	15.3	13.5	9.9	11.9	8.2	6.5	5.3		4.6	3.1/34.5
36.0	16.8	13.5	11.9	11.9	14.7	13.5	9.7	11.8	8.1	6.4	5.3		4.5	3.0
38.0	15.4	13.5	11.5	11.5	14.1	13.5	9.5	11.6	8.0	6.3	5.2		4.5	3.0
40.0	14.1	13.5	11.1	11.1	13.5	13.5	9.4	11.4	7.9	6.2	5.2		4.4	3.0
42.0	12.9	12.9	10.7	10.7	12.8	12.8	9.2	11.3	7.8	6.1	5.1		4.3	3.0
44.0	11.8	11.8	10.3	10.3	12.2	12.2	9.1	11.1	7.6	6.0	5.1		4.3	3.0
46.0	10.9	10.9	9.9	9.9	11.3	11.3	8.9	10.9	7.5	5.9	5.0		4.2	3.0
48.0	10.0	10.0	9.5	9.5	10.4	10.4	8.8	10.8	7.4	5.9	5.0		4.2	2.9
50.0	9.2	9.2	9.1	9.1	9.6	9.6	8.6	10.7	7.3	5.8	4.9		4.1	2.9
52.0	8.4	8.4	8.7	8.7	8.9	8.9	8.4	9.5	7.2	5.7	4.9		4.0	2.9
54.0	7.7	7.7	8.0	8.0	8.2	8.2	8.3	8.8	7.1	5.6	4.8		4.0	2.9
56.0	7.0	7.0	7.3	7.3	7.5	7.5	8.1	8.2	6.9	5.5	4.8		3.9	2.9
58.0	6.3	6.3	6.5	6.5	6.8	6.8	7.6	7.6	6.9	5.4	4.7		3.9	2.9
60.0	5.7	5.7	5.9	5.9	6.2	6.2	6.9	6.9	6.7	5.3	4.7		3.8	2.8
62.0	5.1	5.1	5.3	5.3	5.6	5.6	6.3	6.3	6.6	5.2	4.6		3.7	2.8
64.0	4.5	4.5	4.7	4.7	5.0	5.0	5.7	5.7	6.3	5.1	4.6		3.7	2.8
66.0	4.0	4.0	4.2	4.2	4.5	4.5	5.1	5.2	5.7	5.0	4.5		3.6	2.8
68.0	3.6	3.6	3.7	3.7	4.0	4.0	4.6	4.7	5.2	4.9	4.5		3.6	2.8
70.0	3.1	3.1	3.2	3.2	3.6	3.6	4.1	4.2	4.7	4.5	4.4		3.5	2.8
72.0	2.9/70.9	2.9/71.7	2.9/71.2	2.9	3.1	3.1	3.6	3.8	4.2	4.1	4.4		3.4	2.7
74.0				2.9/72.4			3.2	3.4	3.7	3.7	4.2		3.4	2.7
76.0							2.7	3.0	3.3	3.3	3.7		3.3	2.7
78.0								2.6	2.9	2.9	3.3		3.1	2.7
80.0									2.5	2.5	2.9		2.7	2.7
82.0											2.5		2.7	2.7
84.0														2.5

(EC401057)

■ w/70.10m Boom

Fly jib length (m)	12.20				18.30			24.40		30.50		36.55	
	10		30		10	30	10	30	10	30	10	30	
Fly jib offset angle (°)													
No. of part line	2-part	1-part	2-part	1-part	2-part	1-part	1-part	1-part	1-part	1-part	1-part	1-part	
Working radius (m)													
18.0	22.6/18.5	13.5/18.7											
20.0	21.9	13.5											
22.0	21.2	13.5	14.7	13.5	17.6	13.5							
24.0	20.4	13.5	14.2	13.5	17.1	13.5							
26.0	19.7	13.5	13.7	13.5	16.5	13.5	10.6/25.8	12.8					
28.0	18.9	13.5	13.2	13.2	15.9	13.5	10.5	12.6		7.0/25.0			
30.0	18.2	13.5	12.7	12.7	15.4	13.5	10.4	12.5	8.5/29.4	6.8		4.9/26.1	
32.0	17.4	13.5	12.2	12.2	14.8	13.5	10.2	12.3	8.5	6.7		4.7	
34.0	16.7	13.5	11.7	11.7	14.2	13.5	9.9	12.0	8.3	6.6	5.4/32.4	4.7	
36.0	15.9	13.5	11.2	11.2	13.7	13.5	9.8	11.8	8.2	6.5	5.3	4.6	3.1/35.0
38.0	15.1	13.5	10.7	10.7	13.1	13.1	9.6	11.7	8.1	6.4	5.2	4.5	3.0
40.0	13.5	13.5	10.2	10.2	12.5	12.5	9.5	11.5	7.9	6.3	5.2	4.4	3.0
42.0	12.6	12.6	9.7	9.7	11.9	11.9	9.3	11.4	7.8	6.2	5.1	4.4	3.0
44.0	11.5	11.5	9.3	9.3	11.4	11.4	9.2	11.2	7.7	6.1	5.1	4.3	3.0
46.0	10.5	10.5	8.8	8.8	10.8	10.8	9.0	11.0	7.5	6.0	5.0	4.3	3.0
48.0	9.7	9.7	8.3	8.3	10.1	10.1	8.9	10.8	7.5	5.9	5.0	4.2	2.9
50.0	8.9	8.9	7.8	7.8	9.3	9.3	8.7	10.0	7.4	5.8	4.9	4.1	2.9
52.0	8.1	8.1	7.3	7.3	8.6	8.6	8.6	9.2	7.3	5.7	4.9	4.1	2.9
54.0	7.3	7.3	6.8	6.8	7.8	7.8	8.4	8.5	7.1	5.6	4.9	4.0	2.9
56.0	6.5	6.5	6.3	6.3	7.1	7.1	8.0	7.9	7.0	5.6	4.8	4.0	2.9
58.0	5.9	5.9	5.8	5.8	6.4	6.4	7.3	7.2	6.9	5.5	4.8	3.9	2.9
60.0	5.2	5.2	5.3	5.3	5.8	5.8	6.6	6.5	6.8	5.4	4.7	3.8	2.9
62.0	4.7	4.7	4.8	4.8	5.2	5.2	6.0	5.9	6.6	5.3	4.7	3.8	2.8
64.0	4.1	4.1	4.3	4.3	4.6	4.6	5.3	5.4	6.0	5.2	4.6	3.7	2.8
66.0	3.6	3.6	3.8	3.8	4.1	4.1	4.8	4.8	5.4	5.1	4.6	3.7	2.8
68.0	3.1	3.1	3.3	3.3	3.6	3.6	4.2	4.3	4.6	4.6	4.5	3.6	2.8
70.0		2.9/68.7		3.1/68.8	3.2	3.2	3.7	3.8	4.3	4.1	4.5	3.5	2.8
72.0						3.0/70.7	3.3	3.4	3.8	3.7	4.3	3.5	2.8
74.0							2.8	3.0	3.4	3.3	3.8	3.4	2.7
76.0									2.9	2.9	3.4	3.0	2.7
78.0											3.0	2.7	2.7
80.0											2.6		2.7
82.0													2.8

(EC401057)

■ w/73.15m Boom

Fly jib length (m)	12.20				18.30			24.40		30.50		36.55	
	10		30		10	30	10	30	10	30	10	30	
Fly jib offset angle (°)													
No. of part line	2-part	1-part	2-part	1-part	2-part	1-part	1-part	1-part	1-part	1-part	1-part	1-part	
Working radius (m)													
18.0	19.5/19.0	13.5/19.3											
20.0	19.2	13.5											
22.0	18.5	13.5	14.8	13.5/22.4	17.5	13.5							
24.0	17.9	13.5	14.3	13.5	16.9	13.5			12.9				
26.0	17.2	13.5	13.8	13.5	16.4	13.5	10.6/26.4	12.5			7.0/25.5		
28.0	16.6	13.5	13.3	13.3	15.8	13.5	10.4	12.1	8.5/29.9	6.8		4.9/26.6	
30.0	15.9	13.5	12.8	12.8	15.2	13.5	10.3	11.7	8.5	6.8		4.8	
32.0	15.3	13.5	12.3	12.3	14.7	13.5	10.1	11.3	8.4	6.7	5.4/32.9	4.7	
34.0	14.7	13.5	11.8	11.8	14.1	13.5	10.0	10.9	8.3	6.6	5.3	4.6	3.1/35.5
36.0	14.0	13.5	11.3	11.3	13.5	13.5	9.8	10.5	8.2	6.5	5.3	4.6	3.0
38.0	13.4	13.4	10.8	10.8	13.0	13.0	9.7	10.1	8.1	6.4	5.2	4.5	3.0
40.0	12.7	12.7	10.3	10.3	12.4	12.4	9.6	9.7	8.0	6.3	5.2	4.5	3.0
42.0	12.1	12.1	9.8	9.8	11.9	11.9	9.4	9.3	7.9	6.2	5.1	4.4	3.0
44.0	11.3	11.3	9.3	9.3	11.3	11.3	9.3	8.9	7.8	6.1	5.1	4.4	3.0
46.0	10.3	10.3	8.8	8.8	10.7	10.7	9.1	8.6	7.7	6.1	5.1	4.3	3.0
48.0	9.5	9.5	8.3	8.3	9.9	9.9	9.0	8.2	7.6	6.0	5.0	4.2	3.0
50.0	8.6	8.6	7.8	7.8	9.1	9.1	8.8	7.8	7.4	5.9	5.0	4.2	2.9
52.0	7.8	7.8	7.3	7.3	8.4	8.4	8.7	7.4	7.3	5.8	4.9	4.1	2.9
54.0	7.0	7.0	6.8	6.8	7.6	7.6	8.5	7.0	7.2	5.7	4.9	4.1	2.9
56.0	6.3	6.3	6.3	6.3	6.8	6.8	7.8	6.6	7.1	5.6	4.8	4.0	2.9
58.0	5.6	5.6	5.8	5.8	6.1	6.1	7.0	6.2	7.0	5.5	4.8	3.9	2.9
60.0	5.0	5.0	5.2	5.2	5.5	5.5	6.4	5.8	6.9	5.4	4.7	3.9	2.9
62.0	4.4	4.4	4.6	4.6	4.9	4.9	5.7	5.4	6.3	5.4	4.7	3.8	2.9
64.0	3.8	3.8	4.1	4.1	4.3	4.3	5.1	5.0	5.7	5.3	4.7	3.8	2.8
66.0	3.3	3.3	3.5	3.5	3.6	3.8	4.5	4.6	5.1	4.8	4.6	3.7	2.8
68.0		3.1/66.6	3.0	3.0	3.3	3.3	4.0	4.0	4.6	4.3	4.6	3.7	2.8
70.0				2.9/68.6	2.9	2.9	3.5	3.6	4.1	3.9	4.5	3.6	2.8
72.0						2.8/70.7	3.0	3.1	3.6	3.4	4.1	3.5	2.8
74.0									3.1	3.0	3.6	3.2	2.8
76.0										2.7	3.2	2.8	2.7
78.0											2.8		2.7
80.0													2.7

(EC401057)

Notes — Fly jib capacities

1. Capacities included in this chart are the maximum allowable, and are based on machine standing level on firm supporting surface under ideal job conditions.
2. Capacities are in metric tons, and are based on 78% of minimum tipping loads except the figures surrounded by bold lines which are based on other factor of machine structural limitation.
3. Capacities are based on freely suspended loads and make no allowance for such factors as the effect of wind, sudden stopping of loads, supporting surface conditions, and operating speeds. Operator must reduce load ratings to take such conditions into account. Deduction from rated jib capacities must be made for weight of hook block, weighted ball/hook, sling, load weighing devices, or other suspended gear.
Hook block weight is as follows:
35t0.9t 13.5t0.6t
4. All capacities are rated for 360° swing.
5. Least stable rated position is over the side.
6. An 86.3ton counterweight and 14.0ton carbody weight are required for all capacities on these chart.
7. Maximum fly jib length permitted is 36.55m, and maximum boom and fly jib combination length permitted is 73.15m boom plus 36.55m fly jib.

Liftcrane Capacities with fly jib on top of the main boom

■ w/45.70m Boom

Fly jib length (m)	12.20		18.30		24.40		30.50		36.55	
Fly jib offset angle (°)	10	30	10	30	10	30	10	30	10	30
Working radius (m)										
9.0	75.0/9.9	75.0/9.9	75.0/9.9	75.0/9.9	75.0/9.9	75.0/9.9	75.0/9.9	73.2/9.9	72.4/9.9	71.9/9.9
10.0	75.0	75.0	75.0	75.0	75.0	75.0	75.0	72.9	72.1	71.5
12.0	74.7	74.5	73.8	73.7	72.7	72.3	71.7	71.4	70.6	70.0
14.0	65.1	64.7	64.2	64.2	64.0	63.1	63.2	62.0	62.4	60.8
16.0	53.4	53.0	52.5	52.7	52.4	51.7	51.6	50.6	50.8	49.5
18.0	44.9	44.6	44.0	44.2	43.9	43.3	43.1	42.3	42.3	41.3
20.0	38.4	38.1	37.6	37.8	37.4	36.9	36.7	36.0	35.9	35.0
22.0	33.2	33.0	32.5	32.8	32.3	31.9	31.6	31.0	30.8	30.1
24.0	29.1	28.9	28.4	28.7	28.2	27.9	27.5	27.0	26.8	26.1
26.0	25.7	25.6	25.0	25.3	24.9	24.6	24.1	23.7	23.4	22.9
28.0	22.9	22.8	22.2	22.5	22.0	21.8	21.3	21.0	20.6	20.1
30.0	20.5	20.4	19.8	20.1	19.6	19.4	18.9	18.6	18.2	17.8
32.0	18.4	18.3	17.7	18.1	17.6	17.4	16.9	16.6	16.2	15.8
34.0	16.6	16.5	15.9	16.3	15.8	15.6	15.1	14.9	14.4	14.1
36.0	15.0	15.0	14.4	14.8	14.2	14.1	13.6	13.4	12.9	12.6
38.0	13.7	13.6	13.0	13.4	12.9	12.8	12.2	12.1	11.5	11.3
40.0	12.5	12.4	11.8	12.2	11.7	11.6	11.0	10.9	10.3	10.2
42.0	11.8/41.2	11.8/41.2	11.2/41.2	11.6/41.2	11.0/41.2	10.9/41.2	10.3/41.2	10.3/41.2	9.7/41.2	9.6/41.2

(EC401058)

■ w/48.75m Boom

Fly jib length (m)	12.20		18.30		24.40		30.50		36.55	
Fly jib offset angle (°)	10	30	10	30	10	30	10	30	10	30
Working radius (m)										
10.0	62.5/10.5	62.5/10.5	62.5/10.5	62.5/10.5	62.5/10.5	62.5/10.5	62.5/10.5	62.5/10.5	62.5/10.5	62.5/10.5
12.0	62.5	62.5	62.5	62.5	62.5	62.5	62.5	62.5	62.3	61.5
14.0	62.5	62.5	62.5	62.5	62.5	62.3	61.7	61.4	60.6	60.0
16.0	53.3	53.0	52.5	52.6	52.3	51.6	51.5	50.6	50.8	49.5
18.0	44.6	44.5	44.0	44.2	43.8	43.2	43.1	42.3	42.3	41.3
20.0	38.3	38.0	37.5	37.7	37.4	36.9	36.6	35.9	35.9	35.0
22.0	33.2	32.9	32.4	32.7	32.3	31.8	31.5	31.0	30.8	30.1
24.0	29.0	28.8	28.3	28.6	28.2	27.8	27.4	27.0	26.7	26.1
26.0	25.6	25.4	24.9	25.2	24.8	24.5	24.1	23.6	23.4	22.9
28.0	22.8	22.6	22.1	22.4	21.9	21.7	21.3	20.9	20.5	20.1
30.0	20.3	20.2	19.7	20.0	19.5	19.3	18.9	18.5	18.2	17.7
32.0	18.3	18.2	17.6	18.0	17.5	17.3	16.8	16.5	16.1	15.7
34.0	16.5	16.4	15.8	16.2	15.7	15.5	15.1	14.8	14.3	14.0
36.0	14.9	14.8	14.2	14.6	14.1	14.0	13.4	13.3	12.8	12.5
38.0	13.5	13.4	12.9	13.2	12.7	12.6	12.1	11.9	11.4	11.2
40.0	12.3	12.2	11.7	12.0	11.5	11.4	10.9	10.7	10.2	10.0
42.0	11.2	11.1	10.6	11.0	10.4	10.3	9.8	9.7	9.1	9.0
44.0	10.3/43.9	10.2/43.9	9.7/43.9	10.0/43.9	9.5/43.9	9.4/43.9	8.9/43.9	8.9/43.9	8.2/43.9	8.0/43.9

(EC401058)

■ w/51.80m Boom

Fly jib length (m)	12.20		16.30		24.40		30.50		36.55	
Fly jib offset angle (°)	10	30	10	30	10	30	10	30	10	30
Working radius (m)										
10.0	60.9/11.0	60.7/11.0	60.0/11.0	59.9/11.0	58.9/11.0	58.5/11.0	57.9/11.0	57.6/11.0	56.8/11.0	56.2/11.0
12.0	60.2	60.0	59.3	59.2	58.2	57.8	57.2	56.9	56.1	55.5
14.0	58.7	58.5	57.8	57.7	56.7	56.3	55.7	55.4	54.6	54.0
16.0	53.0	52.7	52.2	52.3	52.1	51.4	51.3	50.3	50.6	49.3
18.0	44.5	44.2	43.7	43.9	43.6	43.0	42.8	42.0	42.1	41.0
20.0	38.0	37.7	37.2	37.4	37.1	36.6	36.4	35.7	35.6	34.7
22.0	32.8	32.6	32.1	32.4	32.0	31.5	31.3	30.7	30.6	29.8
24.0	28.7	28.5	28.0	28.3	27.9	27.5	27.2	26.6	26.5	25.8
26.0	25.3	25.1	24.6	24.9	24.5	24.1	23.8	23.3	23.1	22.5
28.0	22.4	22.3	21.7	22.1	21.6	21.3	21.0	20.6	20.3	19.7
30.0	20.0	19.9	19.3	19.7	19.2	19.0	18.6	18.2	17.9	17.4
32.0	17.9	17.8	17.3	17.6	17.1	16.9	16.5	16.2	15.8	15.4
34.0	16.1	16.0	15.5	15.8	15.3	15.2	14.7	14.4	14.0	13.7
36.0	14.5	14.4	13.9	14.3	13.8	13.6	13.1	12.9	12.5	12.2
38.0	13.1	13.1	12.5	12.9	12.4	12.2	11.7	11.6	11.1	10.8
40.0	11.9	11.8	11.3	11.7	11.1	11.0	10.5	10.4	9.9	9.7
42.0	10.8	10.7	10.2	10.6	10.1	10.0	9.4	9.3	8.8	8.6
44.0	9.8	9.8	9.2	9.6	9.1	9.0	8.5	8.4	7.7	7.5
46.0	8.9	8.9	8.3	8.7	8.2	8.1	7.5	7.4	6.6	6.5
48.0	8.7/46.5	8.7/46.5	8.1/46.5	8.5/46.5	8.0/46.5	7.9/46.5	7.2/46.5	7.2/46.5	6.4/46.5	6.3/46.5

(EC401058)

■ w/54.85m Boom

Fly jib length (m)	12.20		16.30		24.40		30.50		36.55	
Fly jib offset angle (°)	10	30	10	30	10	30	10	30	10	30
Working radius (m)										
10.0	50.0/11.5	50.0/11.5	50.0/11.5	50.0/11.5	50.0/11.5	50.0/11.5	50.0/11.5	50.0/11.5	50.0/11.5	50.0/11.5
12.0	50.0	50.0	50.0	50.0	50.0	50.0	50.0	50.0	50.0	50.0
14.0	50.0	50.0	50.0	50.0	50.0	50.0	50.0	49.9	49.1	48.5
16.0	50.0	50.0	50.0	50.0	49.7	49.3	48.7	48.4	47.6	47.0
18.0	44.4	44.1	43.6	43.8	43.5	42.9	42.8	42.0	42.1	41.0
20.0	37.9	37.8	37.1	37.4	37.0	36.5	36.3	35.6	35.6	34.7
22.0	32.8	32.5	32.0	32.3	31.9	31.5	31.2	30.6	30.6	29.7
24.0	28.6	28.4	27.9	28.2	27.8	27.4	27.1	26.6	26.4	25.7
26.0	25.2	25.0	24.5	24.8	24.4	24.1	23.7	23.3	23.1	22.4
28.0	22.3	22.2	21.7	22.0	21.6	21.3	20.9	20.5	20.2	19.7
30.0	19.9	19.8	19.2	19.5	19.1	18.8	18.5	18.1	17.8	17.4
32.0	17.8	17.7	17.2	17.5	17.1	16.8	16.4	16.1	15.8	15.3
34.0	16.0	15.9	15.4	15.7	15.3	15.1	14.6	14.3	14.0	13.6
36.0	14.4	14.3	13.8	14.2	13.7	13.5	13.0	12.8	12.4	12.1
38.0	13.0	12.9	12.4	12.8	12.3	12.1	11.7	11.4	11.0	10.7
40.0	11.8	11.7	11.1	11.5	11.0	10.9	10.4	10.2	9.8	9.5
42.0	10.6	10.6	10.0	10.4	9.9	9.8	9.3	9.2	8.7	8.4
44.0	9.6	9.6	9.1	9.4	8.9	8.8	8.3	8.2	7.5	7.3
46.0	8.8	8.7	8.2	8.6	8.0	8.0	7.3	7.2	6.5	6.3
48.0	7.9	7.9	7.3	7.8	7.1	7.0	6.3	6.3	5.5	5.4
50.0	7.5/49.1	7.5/49.1	6.9/49.1	7.3/49.1	6.6/49.1	6.6/49.1	5.9/49.1	5.8/49.1	5.1/49.1	5.0/49.1

(EC401058)

■ w/57.90m Boom

Fly jib length (m)	12.20		18.30		24.40		30.50		36.55	
(Fly jib offset angle)	10	30	10	30	10	30	10	30	10	30
Working radius (m)										
12.0	49.7	49.5	48.8	48.7	47.7	47.3	46.7	46.4	45.6	45.0
14.0	48.2	48.0	47.3	47.2	46.2	45.8	45.2	44.9	44.1	43.5
16.0	46.7	46.5	45.8	45.7	44.7	44.3	43.7	43.4	42.6	42.0
18.0	44.2	43.9	43.4	43.6	43.2	42.7	42.2	41.8	41.1	40.5
20.0	37.7	37.4	36.9	37.2	36.9	36.3	36.2	35.4	35.5	34.8
22.0	32.5	32.3	31.8	32.1	31.7	31.3	31.1	30.4	30.4	29.6
24.0	28.4	28.2	27.7	28.0	27.6	27.2	27.0	26.4	26.3	25.6
26.0	25.0	24.8	24.3	24.6	24.2	23.9	23.6	23.1	22.9	22.3
28.0	22.1	21.9	21.4	21.8	21.4	21.1	20.7	20.3	20.1	19.5
30.0	19.7	19.5	19.0	19.4	18.9	18.7	18.3	17.9	17.7	17.2
32.0	17.6	17.5	16.9	17.3	16.9	16.6	16.2	15.9	15.6	15.1
34.0	15.8	15.6	15.1	15.5	15.1	14.8	14.4	14.1	13.8	13.4
36.0	14.2	14.1	13.5	13.9	13.5	13.3	12.8	12.6	12.2	11.9
38.0	12.8	12.7	12.1	12.5	12.1	11.9	11.5	11.2	10.8	10.5
40.0	11.5	11.4	10.9	11.3	10.8	10.7	10.2	10.0	9.6	9.3
42.0	10.4	10.3	9.8	10.2	9.7	9.6	9.1	8.9	8.4	8.1
44.0	9.4	9.3	8.8	9.2	8.7	8.6	8.1	7.9	7.2	7.0
46.0	8.5	8.5	7.9	8.3	7.8	7.7	7.0	6.8	6.2	6.0
48.0	7.7	7.6	7.0	7.5	6.8	6.7	6.1	5.9	5.3	5.1
50.0	6.9	6.8	6.1	6.6	5.9	5.9	5.2	5.1	4.4	4.3
52.0	6.2/51.8	6.1/51.8	5.5/51.8	5.9/51.8	5.2/51.8	5.2/51.8	4.5/51.8	4.4/51.8		

(EC401058)

■ w/60.95m Boom

Fly jib length (m)	12.20		18.30		24.40		30.50		36.55	
(Fly jib offset angle)	10	30	10	30	10	30	10	30	10	30
Working radius (m)										
12.0	45.1/12.6	44.9/12.6	44.2/12.6	44.1/12.6	43.1/12.6	42.7/12.6	42.1/12.6	41.8/12.6	41.0/12.6	40.4/12.6
14.0	44.1	43.9	43.2	43.1	42.1	41.7	41.1	40.8	40.0	39.4
16.0	42.6	42.4	41.7	41.6	40.6	40.2	39.6	39.3	38.5	37.9
18.0	41.1	40.9	40.2	40.1	39.1	38.7	38.1	37.8	37.0	36.4
20.0	37.4	37.1	36.6	36.9	36.6	36.0	35.9	35.2	35.2	34.3
22.0	32.2	32.0	31.5	31.8	31.4	31.0	30.8	30.1	30.1	29.3
24.0	28.1	27.8	27.4	27.7	27.3	26.9	26.7	26.1	26.0	25.3
26.0	24.6	24.4	24.0	24.3	23.9	23.5	23.3	22.8	22.6	22.0
28.0	21.8	21.6	21.1	21.4	21.1	20.7	20.4	20.0	19.8	19.2
30.0	19.3	19.2	18.7	19.0	18.6	18.3	18.0	17.6	17.4	16.8
32.0	17.2	17.1	16.6	17.0	16.5	16.3	15.9	15.6	15.3	14.8
34.0	15.4	15.3	14.8	15.2	14.7	14.5	14.1	13.8	13.5	13.1
36.0	13.8	13.7	13.2	13.6	13.1	12.9	12.5	12.3	11.9	11.5
38.0	12.4	12.3	11.8	12.2	11.7	11.6	11.1	10.9	10.5	10.2
40.0	11.2	11.1	10.6	10.9	10.5	10.3	9.9	9.7	9.3	8.9
42.0	10.0	10.0	9.4	9.8	9.4	9.2	8.8	8.5	8.0	7.7
44.0	9.0	9.0	8.4	8.8	8.4	8.2	7.8	7.4	6.8	6.5
46.0	8.1	8.1	7.5	7.9	7.3	7.2	6.5	6.4	5.8	5.5
48.0	7.2	7.2	6.5	7.0	6.3	6.2	5.6	5.4	4.8	4.6
50.0	6.4	6.3	5.6	6.1	5.5	5.4	4.7	4.6	4.0	
52.0	5.6	5.5	4.9	5.3	4.7	4.6	3.9			
54.0	4.8	4.8	4.2	4.6	4.0	3.9				
56.0	4.7/54.4	4.7/54.4	4.0/54.4	4.5/54.4	3.8/54.4	3.8/54.4				

(EC401058)

■ w/64.00m Boom

Fly jib length (m)	12.20		16.30		24.40		30.50		36.55	
Fly jib offset angle / Working radius (m)	10	30	10	30	10	30	10	30	10	30
12.0	40.7/13.1	40.5/13.1	39.8/13.1	39.7/13.1	38.7/13.1	38.3/13.1	37.7/13.1	37.4/13.1	36.6/13.1	36.0/13.1
14.0	40.1	39.9	39.2	39.1	38.1	37.7	37.1	36.8	36.0	35.4
16.0	38.6	38.4	37.7	37.6	36.6	36.2	35.6	35.3	34.5	33.9
18.0	37.1	36.9	36.2	36.1	35.1	34.7	34.1	33.8	33.0	32.4
20.0	35.6	35.4	34.7	34.6	33.6	33.2	32.6	32.3	31.5	30.9
22.0	32.0	31.8	31.3	31.6	31.3	30.8	30.6	30.0	30.0	29.1
24.0	27.9	27.6	27.2	27.5	27.1	26.7	26.5	25.9	25.8	25.1
26.0	24.4	24.2	23.8	24.1	23.7	23.3	23.1	22.6	22.4	21.8
28.0	21.6	21.4	20.9	21.2	20.9	20.5	20.2	19.8	19.6	19.0
30.0	19.1	19.0	18.5	18.8	18.4	18.1	17.6	17.4	17.2	16.7
32.0	17.0	16.9	16.4	16.7	16.3	16.1	15.7	15.4	15.1	14.6
34.0	15.2	15.1	14.6	14.9	14.5	14.3	13.9	13.6	13.3	12.9
36.0	13.6	13.5	13.0	13.4	12.9	12.7	12.3	12.0	11.7	11.3
38.0	12.2	12.1	11.6	12.0	11.5	11.3	10.9	10.7	10.3	10.0
40.0	10.9	10.8	10.3	10.7	10.3	10.1	9.7	9.5	9.0	8.8
42.0	9.8	9.7	9.2	9.6	9.2	9.0	8.5	8.3	7.7	7.4
44.0	8.8	8.7	8.2	8.6	8.1	7.9	7.3	7.1	6.6	6.3
46.0	7.9	7.8	7.2	7.6	7.0	6.9	6.3	6.1	5.5	5.2
48.0	6.9	6.9	6.2	6.7	6.1	5.9	5.3	5.1	4.5	4.3
50.0	6.0	6.0	5.3	5.8	5.2	5.1	4.4	4.3		
52.0	5.2	5.2	4.5	5.0	4.4	4.3				
54.0	4.5	4.5	3.8	4.3						
56.0	3.8	3.8		3.6						

(EC401058)

■ w/67.05m Boom

Fly jib length (m)	12.20		16.30		24.40		30.50		36.55	
Fly jib offset angle / Working radius (m)	10	30	10	30	10	30	10	30	10	30
12.0	37.4/13.6	37.2/13.6	36.5/13.6	36.4/13.6	35.4/13.6	35.0/13.6	34.4/13.6	34.1/13.6	33.3/13.6	32.7/13.6
14.0	37.1	36.9	36.2	36.1	35.1	34.7	34.1	33.8	33.0	32.4
16.0	35.6	35.4	34.7	34.6	33.6	33.2	32.6	32.3	31.5	30.9
18.0	34.1	33.9	33.2	33.1	32.1	31.7	31.1	30.8	30.0	29.4
20.0	32.6	32.4	31.7	31.6	30.6	30.2	29.6	29.3	28.5	27.9
22.0	31.1	30.9	30.2	30.1	29.1	28.7	28.1	27.8	27.0	26.4
24.0	27.8	27.6	27.1	27.4	27.1	26.7	26.5	25.9	25.5	24.9
26.0	24.4	24.2	23.7	24.0	23.7	23.3	23.1	22.5	22.4	21.7
28.0	21.5	21.3	20.8	21.2	20.8	20.5	20.2	19.7	19.6	19.0
30.0	19.0	18.9	18.4	18.8	18.4	18.1	17.6	17.4	17.2	16.8
32.0	16.9	16.8	16.3	16.7	16.3	16.0	15.7	15.3	15.1	14.6
34.0	15.1	15.0	14.5	14.9	14.5	14.2	13.9	13.5	13.3	12.9
36.0	13.5	13.4	12.9	13.3	12.9	12.6	12.3	12.0	11.7	11.3
38.0	12.1	12.0	11.5	11.9	11.5	11.3	10.9	10.6	10.3	9.9
40.0	10.8	10.7	10.2	10.6	10.2	10.0	9.5	9.4	8.9	8.5
42.0	9.7	9.6	9.1	9.5	9.1	8.9	8.4	8.1	7.6	7.3
44.0	8.7	8.6	8.1	8.5	7.9	7.8	7.2	7.0	6.4	6.1
46.0	7.7	7.6	7.0	7.5	6.9	6.7	6.1	5.9	5.4	5.1
48.0	6.7	6.7	6.0	6.5	5.9	5.8	5.2	5.0	4.4	4.2
50.0	5.9	5.8	5.1	5.6	5.0	4.9	4.3	4.1		
52.0	5.0	5.0	4.3	4.8	4.2	4.1				
54.0	4.3	4.2		4.1						
56.0	3.6	3.6								

(EC401058)

■ w/70.10m Boom

Fly jib length (m)	12.20		18.30		24.40		30.50		36.55	
	10	30	10	30	10	30	10	30	10	30
14.0	34.4/14.2	34.2/14.2	33.5/14.2	33.4/14.2	32.4/14.2	32.0/14.2	31.4/14.2	31.1/14.2	30.3/14.2	29.7/14.2
16.0	33.1	32.9	32.2	32.1	31.1	30.7	30.1	29.8	29.0	28.4
18.0	31.6	31.4	30.7	30.6	29.6	29.2	28.6	28.3	27.5	26.9
20.0	30.1	29.9	29.2	29.1	28.1	27.7	27.1	26.8	26.0	25.4
22.0	28.6	28.4	27.7	27.6	26.6	26.2	25.6	25.3	24.5	23.9
24.0	27.1	26.9	26.2	26.1	25.1	24.7	24.1	23.8	23.0	22.4
26.0	24.0	23.8	23.4	23.7	23.4	23.0	22.6	22.2	21.5	20.9
28.0	21.2	21.0	20.5	20.8	20.5	20.1	19.9	19.4	19.3	18.7
30.0	18.7	18.5	18.1	18.4	18.1	17.7	17.5	17.0	16.9	16.3
32.0	16.6	16.4	16.0	16.3	16.0	15.7	15.4	15.0	14.8	14.3
34.0	14.8	14.6	14.1	14.5	14.1	13.9	13.5	13.2	13.0	12.5
36.0	13.2	13.0	12.5	12.9	12.5	12.3	12.0	11.6	11.4	10.9
38.0	11.7	11.6	11.1	11.5	11.1	10.9	10.5	10.3	10.0	9.5
40.0	10.5	10.4	9.9	10.3	9.9	9.7	9.3	9.0	8.5	8.1
42.0	9.3	9.2	8.8	9.2	8.7	8.5	8.0	7.7	7.2	6.8
44.0	8.3	8.2	7.6	8.1	7.5	7.3	6.8	6.5	6.0	5.7
46.0	7.2	7.1	6.5	7.0	6.4	6.2	5.7	5.5	5.0	4.6
48.0	6.3	6.2	5.5	6.0	5.4	5.3	4.7	4.5		
50.0	5.4	5.3	4.7	5.1	4.6	4.4				
52.0	4.6	4.5		4.3						
54.0	3.8									

(EC401058)

■ w/73.15m Boom

Fly jib length (m)	12.20		18.30		24.40		30.50		36.55	
	10	30	10	30	10	30	10	30	10	30
14.0	32.0/14.7	31.8/14.7	31.1/14.7	31.0/14.7	30.0/14.7	29.6/14.7	29.0/14.7	28.7/14.7	27.9/14.7	27.3/14.7
16.0	31.1	30.9	30.2	30.1	29.1	28.7	28.1	27.8	27.0	26.4
18.0	29.6	29.4	28.7	28.6	27.6	27.2	26.6	26.3	25.5	24.9
20.0	28.1	27.9	27.2	27.1	26.1	25.7	25.1	24.8	24.0	23.4
22.0	26.6	26.4	25.7	25.6	24.6	24.2	23.6	23.3	22.5	21.9
24.0	25.1	24.9	24.2	24.1	23.1	22.7	22.1	21.8	21.0	20.4
26.0	23.6	23.4	22.7	22.6	21.6	21.2	20.6	20.3	19.5	18.9
28.0	20.9	20.7	20.3	20.6	20.1	19.7	19.1	18.8	18.0	17.4
30.0	18.5	18.3	17.9	18.2	17.9	17.5	17.3	16.8	16.5	15.9
32.0	16.4	16.2	15.8	16.1	15.8	15.5	15.2	14.8	14.6	14.1
34.0	14.5	14.4	13.9	14.3	13.9	13.7	13.4	13.0	12.8	12.3
36.0	12.9	12.8	12.3	12.7	12.3	12.1	11.8	11.4	11.2	10.7
38.0	11.5	11.4	10.9	11.3	10.9	10.7	10.3	10.0	9.7	9.2
40.0	10.2	10.1	9.7	10.1	9.7	9.5	9.0	8.7	8.3	7.8
42.0	9.1	9.0	8.5	8.9	8.4	8.2	7.7	7.4	6.9	6.5
44.0	8.0	7.9	7.3	7.8	7.2	7.0	6.5	6.2	5.8	5.4
46.0	6.9	6.8	6.2	6.7	6.1	6.0	5.4	5.2	4.7	4.4
48.0	6.0	5.9	5.2	5.7	5.1	5.0	4.5	4.2		
50.0	5.1	5.0	4.4	4.8	4.3	4.1				
52.0	4.2	4.2		4.0						

(EC401058)

Notes — Liftcrane capacities

1. These capacity charts show the figures when handling load off main boom head sheaves in a case of mounting fly jib on top of main boom.
2. Capacities included in these charts are the maximum allowable, and are based on machine standing level on firm supporting surface under ideal job conditions.
3. Capacities are in metric tons, and are not more than 78% of minimum tipping loads except the figures surrounded by bold lines which are based on other factor of machine structural limitation.
4. Capacities are based on freely suspended loads and make no allowance for such factors as the effect of wind, sudden stopping of loads, supporting surface conditions, and operating speeds. Operator must reduce load ratings to take such conditions into account. Deduction from rated capacities must be made for

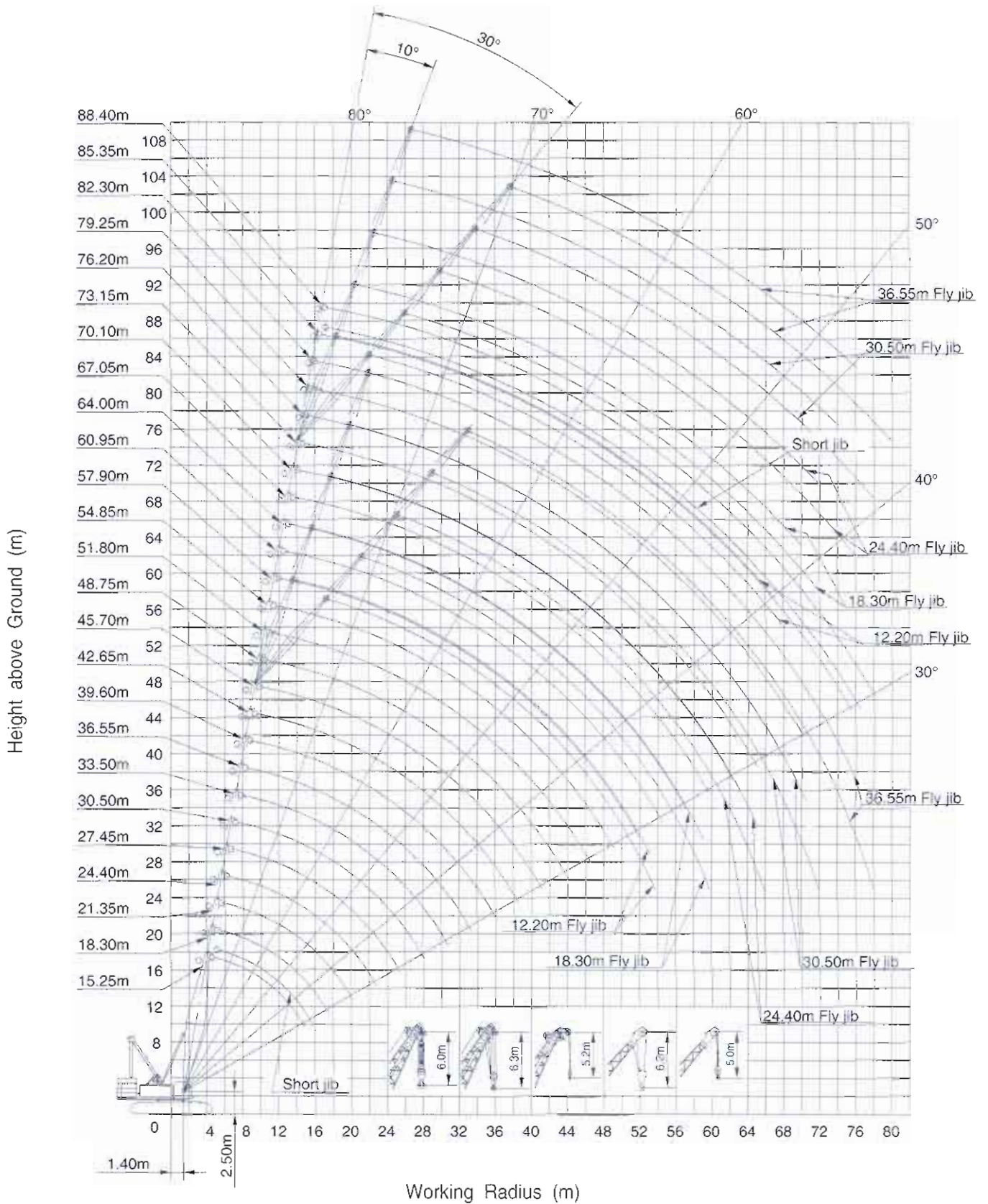
weight of hook block, weighted ball/hook, sling, spreader bar, or other suspended gear.

Hook block weight is as follows:

80t1.4t 35t0.9t 13.5t0.6t

5. All capacities are rated for 360° swing.
6. An 86.3ton counterweight and 14.0ton carbody weight are required for all capacities on these chart..
7. Least stable rated condition is over the side.
8. Maximum boom and fly jib combination length permitted— 73.15m boom plus 36.55m fly jib.
9. Boom combination shall be in accordance with manufacture's standard described in "Boom Combination Diagram" of basic technical data.

Liftcrane Working Ranges





Specifications subject to change without notice

(1300 65 8888)

Website: www.btequipment.com.au

		Phone	Fax
BRISBANE	10-14 Ashover Road, Rocklea. Qld 4106	(07) 3373 6400	(07) 3875 1680
SYDNEY	6 Ferngrove Place, South Granville. NSW 2142	(02) 9780 7200	(02) 9780 7290
MELBOURNE	80-86 Frankston-Dandenong Road, Dandenong. Vic 3175	(03) 9554 0300	(03) 9554 0398
ADELAIDE	908 Main North Road, Mawson Lakes. SA 5095	(08) 8262 8292	(08) 8262 8320
PERTH	50 Great Eastern Highway, South Guildford. WA 6055	(08) 9478 0600	(08) 9478 0688

Address Inquires to: